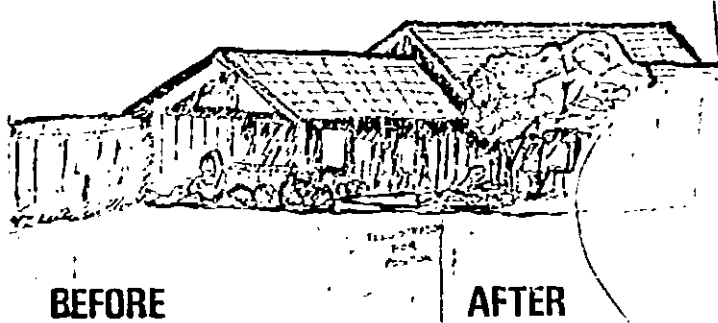




ORTHO GREENOL Lawn Tonic

CORRECTS IRON AND SULFUR DEFICIENCIES FOR A GREENER LAWN
 KILLS MOSS IN GRASS LAWNS
 TURNS IRON STARVED YELLOW GRASS DEEP GREEN
 COVERS UP TO 5,000 SQ. FT.



BEFORE

AFTER

INGREDIENT STATEMENT AS A HERBICIDE

Active Ingredients	By Wt.
Ferrous Iron Calculated As Ferrous Ammonium Sulfate.....	30.0%
Ferric Iron Calculated As Ferric Ammonium Sulfate	15.2%
Inert Ingredients	54.8%
Total Iron	9.1%

Keep out of reach of children 12 1/2

CAUTION 18 1/2

See back panel for additional precautionary statements

3/11/83
239-3502

NET WT. 22 LBS.

GREENOL Lawn Tonic
GREEN LAWNS OR MONEY BACK
(See Back Panel for Complete Guarantee Statement)
 07851 B

ORTHO GREENOL Lawn Tonic 07851 B

ORTHO GREENOL Lawn Tonic 07851 B

PRECAUTIONARY STATEMENTS 12 p†

HAZARD TO HUMANS & DOMESTIC ANIMALS 12 p†
CAUTION - 12 p†

Harmful if swallowed. Avoid contact with eyes. Wash hands after use.

STATEMENT OF PRACTICAL TREATMENT 12 p†

If swallowed, give a large amount of water to drink, make person vomit, and call a doctor. In case of eye contact, wash eyes immediately with fresh water for at least 15 minutes. See a doctor if irritation persists.

Note to Physicians: Emergency information - call (415) 233 3137

13-0-0

GUARANTEED FERTILIZER ANALYSIS

Total Nitrogen (N) 13%
11.0% Ammoniacal Nitrogen
Sulfur (S) as Combined 20%
Iron (Fe) 5%
Primary Nutrient from Ammonium Sulfate
Secondary and Trace Nutrients from Ammonium Sulfate and Iron Sulfate
Potential Acidity 1300 lbs. Calcium Carbonate Equivalent per ton
400 lbs. Sulfur per ton
(84-102)

INGREDIENT STATEMENT AS A HERBICIDE

Active Ingredients	By Wt.
Ferrous Iron Calculated As	
Ferrous Ammonium Sulfate.....	30.0%
Ferric Iron Calculated As	
Ferric Ammonium Sulfate	15.2%
Inert Ingredients	54.8%
Total Iron 9.1%	
Equivalent to 910 lbs. Ferrous Sulfate per ton	

IMPORTANT: GREENOL Lawn Tonic will stain cement if not swept off of curbs, sidewalks and driveways immediately after application. Wash pellets from foliage of lawn grass and border plants with water.

DIRECTIONS FOR USE

It is a violation of federal law to use this product in a manner inconsistent with its labeling

READ ENTIRE LABEL USE STRICTLY IN ACCORDANCE WITH LABEL PRECAUTIONARY STATEMENTS AND DIRECTIONS.

GREENOL Lawn Tonic is designed to perform 3 important functions:

1. Corrects and prevents (yellowing) chlorosis caused by Iron and Sulfur deficiencies giving prolonged greening response.
2. Provides two sources of Nitrogen that help to build thick green grass.
3. Controls moss in grass lawns.

DIRECTIONS

TO CORRECT IRON AND SULFUR DEFICIENCIES—

When To Use—Apply as a supplement to a complete fertilizer program any time during year when (yellowing) chlorosis is noticed.

How To Use—Apply the contents of this bag evenly over 5,000 sq. ft. (3 lbs. covers 680 sq. ft.) using an ORTHO WHIRLYBIRD, ORTHO Drop or Broadcast Spreader. See next column for proper spreader settings.

For faster results, water lawn thoroughly after application to dissolve pellets and carry nutrients down into root zone.

FOR MOSS CONTROL

When To Use—

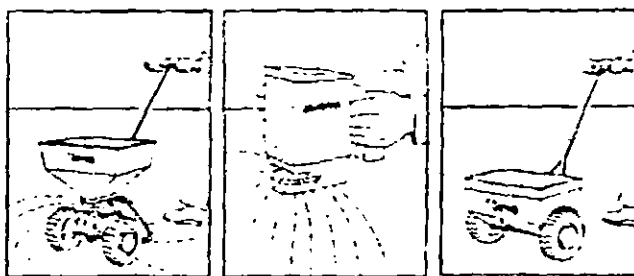
GREENOL Lawn Tonic controls moss best when applied in the early spring when moss is actively growing and soil is moist. In areas where moss is prevalent in lawns, yearly applications may be necessary. In addition, GREENOL Lawn Tonic may be used anytime of the year (even if moss is not present) to supply the important nutrients Nitrogen, Sulfur and Iron needed for greener lawns.

How To Use —

1. Rake lawn to remove leaves, dead grass and other debris.
2. Mow lawn to expose moss and allow pellets to enter soil readily.
3. Apply contents of this bag evenly over 4,400 sq. ft. (5 lbs. covers 1,000 sq. ft.) using an ORTHO WHIRLYBIRD, ORTHO Drop or broadcast spreader (see below for proper spreader settings). For best results, treat entire lawn. Do not spot treat.
4. Water thoroughly immediately after application to improve moss control and wash pellets off grass and down into soil.
5. Sweep off sidewalks, driveways and painted surfaces as staining may occur. (See IMPORTANT)

The effect of GREENOL Lawn Tonic becomes evident soon after treatment. The moss will turn black in color and a marked improvement in both color and vigor of the grass should occur. The dead moss will gradually disintegrate to add humus to the soil, or if extremely heavy, may be raked-up and removed.

FAST, EASY APPLICATION WITH ORTHO SPREADERS



ORTHO Broadcast Spreader

ORTHO WHIRLYBIRD Spreader

ORTHO Drop Spreader

GENERAL DIRECTIONS

Cover lawn in one direction, making applications 9 ft apart. Do not use criss-cross pattern. Due to wide swath use ORTHO Broadcast Spreader in open areas.

Start cranking the WHIRLYBIRD handle before depressing thumb lever. To insure complete coverage, spread in a criss-cross pattern by applying the second WHIRLYBIRD full at right angles to the first. For application in confined areas and along border plants, control of swath width can be obtained by holding the WHIRLYBIRD closer to the ground or cranking the handle in the opposite direction when using.

Cover lawn in one direction. Do not use criss-cross pattern. To ensure complete coverage, overlap wheel tracks. When making turns, shut off spreader to avoid over-application.

FOR CORRECTING IRON AND SULFUR DEFICIENCIES

*Use setting No. 3 Swath width 9 ft. Apply 22 lbs to cover 5,000 sq. ft. (100' x 50')	*Use setting No. 2 Apply one (1) WHIRLYBIRD full (3 lbs) to 680 sq. ft. (40' x 17')	*Use setting No. 5 Apply 22 lbs to cover 5,000 sq. ft. (100' x 50')
---	---	---

FOR MOSS CONTROL IN LAWNS

Use setting No. 4 Swath width 9 ft. Apply 22 lbs to cover 4,400 sq. ft. (100' x 44')	Use setting No. 2 Apply 2 WHIRLYBIRDS full to 1,360 sq. ft. (30' x 40')	Use setting No. 6 Apply 22 lbs. to cover 4,400 sq. ft. (100' x 44')
--	---	---

*Variables inherent in equipment as well as accuracy of machine adjustment may cause application rates to deviate. Therefore, CHEVRON makes no warranty as to the uniformity of coverage obtained from this setting.

PESTICIDE-FERTILIZER MIXTURE containing 30% Ferrous Iron and 15.2% Ferric Iron

STORAGE AND DISPOSAL 12 p†

Keep bag closed when not in use. Store in a dry place. Keep pesticide in original container. Do not reuse empty container. Wrap container and put in trash collection.

NOTICE: Buyer assumes all responsibility for safety and use not in accordance with directions.

07851 B

ORTHOS MONEY BACK GUARANTEE
If you are not satisfied with the results after using this product, send us this guarantee with your sales receipt. Your refund check will be mailed to you promptly.

CHEVRON CHEMICAL CO.
ORTHOS CONSUMER PRODUCTS DIVISION
PO Box 3144 San Francisco 94120

Manufactured for
Chevron Chemical Company
Ortho Consumer Products Division
San Francisco CA 94120-7144 Richmond CA 94804-0036
Product Sold in U.S.A.
Form 10203-A EPA Est. 239-1A-1
EPA Reg. No. 239-1A-1