



# CHEVRON<sup>®</sup> LAWN & TURF fungicide

READ ENTIRE LABEL. USE STRICTLY IN ACCORDANCE WITH LABEL CAUTIONS, WARNINGS AND DIRECTIONS.

STORE IN COOL, DRY PLACE. PROTECT FROM EXCESSIVE HEAT.

**CHEVRON** Lawn & Turf Fungicide is a wettable powder formulation to be used as a spray and designed to control common diseases of lawn and turf grasses such as **Brown Patch** (Rhizoctonia), **Melting Out** (Helminthosporium), **Fusarium Patch** (Fusarium), **Cottony Blight** (Pythium), **Dollar Spot** (Sclerotinia), **Red Thread** (Corficcium), **Fading Out** (Curvularia), **Copper Spot** (Gloeocercospora), **Snow Mold** (Fusarium spp. and Typhula spp.). Do not store diluted spray. Make new dilution for each use.

For Best Results, use an ORTHO Garden Hose Sprayer.

### DIRECTIONS

### MANAGEMENT SCHEDULE:

1. One day before treatment—Mow lawn. Irrigate if necessary.
2. Day of treatment—After morning dew is off lawn, apply **CHEVRON** Lawn & Turf Fungicide as directed (see below).
3. First and second day following treatment—Do not mow lawn. Do not irrigate.
4. Repeat this schedule according to the PREVENTIVE or CURATIVE PROGRAMS outlined below.

### APPLICATION RATES:

Use ORTHO Lawn Sprayer to apply treatments. Add the required amount of **CHEVRON** Lawn & Turf Fungicide to the sprayer jar and add a small amount of water. Mix until thin paste is formed, add water to bring to desired level and stir. Apply spray evenly. 15 gallons treats 1000 square feet. Agitate jar while spraying.

### DILUTION TABLE

| CHEVRON Lawn & Turf Fungicide To Use | Add Water To Make | To Cover     |
|--------------------------------------|-------------------|--------------|
| PREVENTIVE                           | 3 gallons         | 200 sq. ft.  |
|                                      | 7½ gallons        | 500 sq. ft.  |
|                                      | 15 gallons        | 1000 sq. ft. |
| CURATIVE                             | 3 gallons         | 250 sq. ft.  |
|                                      | 7½ gallons        | 500 sq. ft.  |
|                                      | 15 gallons        | 1000 sq. ft. |

### PREVENTIVE PROGRAM:

Under normal conditions, apply every 3 to 4 weeks. During periods of very wet or damp weather, repeat treatments every 10 to 14 days. Follow the MANAGEMENT SCHEDULE each time treatment is made. On new lawns, begin treatments as soon as first seeds germinate and repeat every 10 days until lawn is well established.

### CURATIVE PROGRAM:

Use 6 ounces of **CHEVRON** Lawn & Turf Fungicide per 1000 square feet. For easy application, see above for use of ORTHO Lawn Sprayer. Follow the MANAGEMENT SCHEDULE making at least 3 successive applications at 5 to 7 day intervals and continue until disease is halted. Re-seed areas destroyed by disease. Continue treatments using PREVENTIVE PROGRAM.

### SNOW MOLD PROGRAM:

Snow Mold may be controlled by fall or early spring applications. The best time to apply is just before the first lasting snow. Additional treatments at the preventive rate may be needed if the snow melts in mid-winter or early spring.

**SPECIAL COMBINATION SPRAY:** To control lawn insects such as white grubs, wireworms, sod webworms and ants, as well as listed diseases—Use 4 teaspoonfuls of ORTHO-KLOR 74 Chlor-dane Spray with 6 Tablespoonfuls of **CHEVRON** Lawn & Turf Fungicide to 200 square feet.

**COMMERCIAL APPLICATION:** For use in tank type sprayer, use 4 ounces per 5 gallons of water for each 1000 square feet (2½ lbs. in each 50 gals. water to spray 10,000 sq. ft.)

**CAUTION:** Harmful if Swallowed! May cause skin irritation. If taken internally induce vomiting and call a physician at once. Do not breathe dust or spray mist. Do not get in eyes or on skin. Wash thoroughly after handling. Avoid contamination of feed and foodstuffs. Keep out of reach of children and domestic animals. Dispose of container promptly when empty.

**NOTICE:** Buyer assumes all responsibility for safety and use not in accordance with directions.

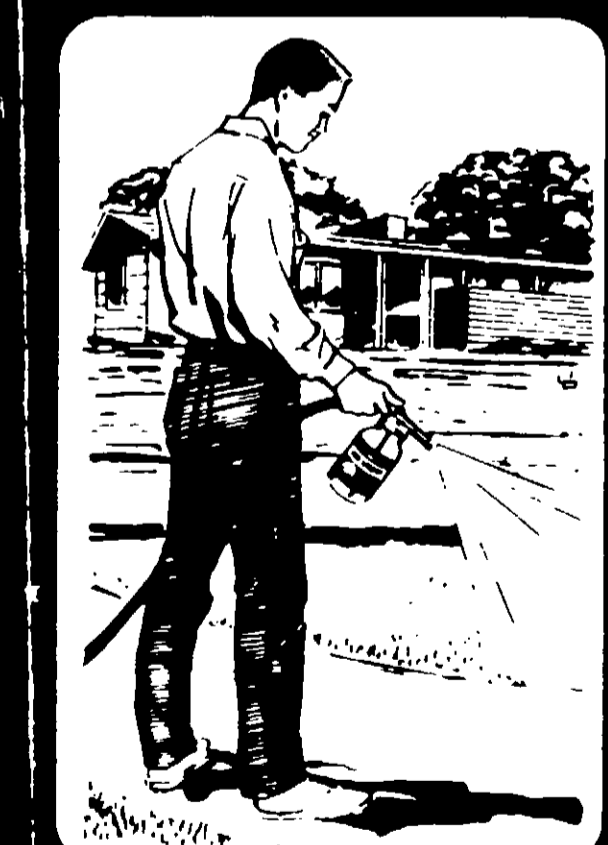
**CHEVRON CHEMICAL COMPANY**  
ORTHO DIVISION  
RICHMOND, CALIF.    Atlanta, Georgia    Des Plaines, Illinois  
Form 5956 E (Northeast)    USDA Reg. No. 244-1426    Product 2997    Made in U.S.A.



**CHEVRON<sup>®</sup>**

# LAWN & TURF fungicide

Dec 6, 1967



## CONTROLS COMMON LAWN & TURF DISEASES

BROWN PATCH  
MELTING OUT  
DOLLAR SPOT  
SNOW-MOLD  
and many others

239-1426



# CHEVRON<sup>®</sup> LAWN & TURF fungicide

READ ENTIRE LABEL. USE STRICTLY IN ACCORDANCE WITH LABEL CAUTIONS, WARNINGS AND DIRECTIONS.

STORE IN COOL, DRY PLACE. PROTECT FROM EXCESSIVE HEAT.

**CHEVRON** Lawn & Turf Fungicide is a wettable powder formulation to be used as a spray and designed to control common diseases of lawn and turf grasses such as **Brown Patch** (Rhizoctonia), **Melting Out** (Helminthosporium), **Fusarium Patch** (Fusarium), **Cottony Blight** (Pythium), **Dollar Spot** (Sclerotinia), **Red Thread** (Corticium), **Fairy Ring** (Curvularia), **Copper Spot** (Gloeocercospora), **Snow Mold** (Fusarium spp. and Typhula spp.). Do not store diluted spray. Make new dilution for each use.

For Best Results, use an ORTHO Garden Hose Sprayer.

### DIRECTIONS

To obtain maximum results, it is important that the lawn be properly managed before and after treatment with **CHEVRON** Lawn & Turf Fungicide. Use the following MANAGEMENT SCHEDULE as a guide.

### MANAGEMENT SCHEDULE:

1. One day before treatment—Mow lawn. Irrigate if necessary.
2. Day of treatment—After morning dew is off lawn, apply **CHEVRON** Lawn & Turf Fungicide as directed (see below).
3. First and second day following treatment—Do not mow lawn. Do not irrigate.
4. Repeat this schedule according to the PREVENTIVE or CURATIVE PROGRAMS outlined below.

### APPLICATION RATES:

Use ORTHO Lawn Sprayer to apply treatments. Add the required amount of **CHEVRON** Lawn & Turf Fungicide to the sprayer jar and add a small amount of water. Mix until thin paste is formed, add water to bring to desired level and stir. Apply spray evenly. 15 gallons treats 1000 square feet. Agitate jar while spraying.

### DILUTION TABLE

| CHEVRON Lawn & Turf Fungicide To Use | Add Water To Make | To Cover     |
|--------------------------------------|-------------------|--------------|
| <b>PREVENTIVE:</b>                   |                   |              |
| 6 level Tablespoonfuls               | 3 gallons         | 200 sq. ft.  |
| 2 ounces                             | 7½ gallons        | 500 sq. ft.  |
| 4 ounces                             | 15 gallons        | 1000 sq. ft. |
| <b>CURATIVE:</b>                     |                   |              |
| 9 level Tablespoonfuls               | 3 gallons         | 200 sq. ft.  |
| 3 ounces                             | 7½ gallons        | 500 sq. ft.  |
| 6 ounces                             | 15 gallons        | 1000 sq. ft. |

### PREVENTIVE PROGRAM:

Under normal conditions, apply every 3 to 4 weeks. During periods of very wet or damp weather, repeat treatments every 10 to 14 days. Follow the MANAGEMENT SCHEDULE each time treatment is made. On new lawns, begin treatments as soon as first seeds germinate and repeat every 10 days until lawn is well established.

### CURATIVE PROGRAM:

Use 6 ounces of **CHEVRON** Lawn & Turf Fungicide per 1000 square feet. For easy application, see above for use of ORTHO Lawn Sprayer. Follow the MANAGEMENT SCHEDULE making at least 3 successive applications at 5 to 7 day intervals and continue until disease is halted. Re-seed areas destroyed by disease. Continue treatments using PREVENTIVE PROGRAM.

### SNOW MOLD PROGRAM:

Snow Mold may be controlled by fall or early spring applications. The best time to apply is just before the first lasting snow. Additional treatments at the preventive rate may be needed if the snow melts in mid-winter or early spring.

**SPECIAL COMBINATION SPRAY:** To control lawn insects such as white grubs, wireworms, sod webworms and ants, as well as listed diseases—Use 4 teaspoonfuls of ORTHO-KLOR 74 Chlor-dane Spray with 6 Tablespoonfuls of **CHEVRON** Lawn & Turf Fungicide to 200 square feet.

**COMMERCIAL APPLICATION:** For use in tank type sprayer, use 4 ounces per 5 gallons of water for each 1000 square feet (2½ lbs. in each 50 gals. water to spray 10,000 sq. ft.)

**CAUTION:** Harmful if Swallowed! May cause skin irritation. If taken internally induce vomiting and call a physician at once. Do not breathe dust or spray mist. Do not get in eyes or on skin. Wash thoroughly after handling. Avoid contamination of feed and foodstuffs. Keep out of reach of children and domestic animals. Dispose of container promptly when empty.

**NOTICE:** Buyer assumes all responsibility for safety and use not in accordance with directions.



## CHEVRON CHEMICAL COMPANY

ORTHO DIVISION — San Francisco, California  
RICHMOND, CALIF. Atlanta, Georgia Des Plaines, Illinois  
Form 5956-E (Northeast) USDA Reg. No. 239 1426 Product 2997 Made in U.S.A.



## CHEVRON<sup>®</sup>

# LAWN & TURF fungicide

57-1426  
Dec 6, 1967



## CONTROLS COMMON LAWN & TURF DISEASES

BROWN PATCH  
MELTING OUT  
DOLLAR SPOT  
SNOW MOLD  
and many others

239-1426



READ ENTIRE LABEL USE STRICTLY IN ACCORDANCE WITH LABEL CAUTIONS WARNINGS AND DIRECTIONS

STORE IN COOL, DRY PLACE PROTECT FROM EXCESSIVE HEAT

Melting Out Brown Patch
Cottony Blight Fusarium Patch
Thread Fading Out Dollar Spot Red
Snow Mold Copper Spot

For Best Results

MANAGEMENT SCHEDULE

before treatment...
Apply CHEVRON FUNGICIDE...

APPLICATION RATES

Apply CHEVRON FUNGICIDE...
at the rate of...

CHEVRON fungicide

PREVENTIVE PROGRAM

Apply CHEVRON FUNGICIDE...
before the first rain...

CURATIVE PROGRAM

Apply CHEVRON FUNGICIDE...
at the first sign of...

SNOW MOLD PROGRAM

Apply CHEVRON FUNGICIDE...
before the first snow...

SPECIAL COMBINATION SPRAY

Apply CHEVRON FUNGICIDE...
with a fungicide...

COMMERCIAL APPLICATION

Apply CHEVRON FUNGICIDE...
at the rate of...

CAUTION

Do not breathe...
Do not get on skin...

NOTICE

Apply CHEVRON FUNGICIDE...

CHEVRON CHEMICAL COMPANY

TREATS UP TO 3000 SQ. FT.



CHEVRON

FARMER FUNGICIDE



Active Ingredients:
Foliar 30%
Cottony Carbonate 5%
Thiazole 30%
Inert Ingredients 25%

CAUTION: KEEP OFF OF SKIN & CLOTHING
SEE BACK PANEL FOR OTHER PRECAUTIONS
NET WEIGHT 12 OUNCES