

### PRECAUTIONARY STATEMENTS

#### HAZARDS TO HUMANS & DOMESTIC ANIMALS

##### CAUTION

Keep this and all other pesticides out of the reach of children. Do not use this or any other pesticide on food crops unless the label directions specifically allow it.

##### STATEMENT OF PRACTICAL TREATMENT

**IF SWALLOWED:** Promptly drink a large quantity of water. Do not induce vomiting. If symptoms persist, call a physician.

**IF INHALED:** Remove to fresh air. If symptoms persist, call a physician.

**IF ON SKIN:** Wash thoroughly with soap and water.

**IF IN EYES:** Flush eyes with water for 15 minutes. Call a physician.

**Note to Physician:** Emergency treatment code: 41-5100

##### ENVIRONMENTAL HAZARDS

This product is toxic to fish. Keep out of any stream, pond, or lake. Do not apply when weather conditions favor drift onto areas treated.

This product is toxic to birds and bees. Do not apply to plants being fed or visited by bees.

##### PHYSICAL OR CHEMICAL HAZARDS

Flammable. Keep away from heat, sparks, flames.

##### DIRECTIONS FOR USE

It is a violation of Federal law to use this product in a manner inconsistent with its labeling.

**READ ENTIRE LABEL. USE STRICTLY IN ACCORDANCE WITH PRECAUTIONARY STATEMENTS AND DIRECTIONS AND WITH APPLICABLE STATE AND FEDERAL REGULATIONS.**

### STORAGE AND DISPOSAL

#### PROHIBITIONS

Do not contaminate water, food or feed by storage, transport or cleaning of equipment.

Open dumping is prohibited.

#### STORAGE

Keep pesticide in original container.

Do not put concentrates or dilute into food or feed containers.

Do not store or transport near feed or food.

#### PESTICIDE DISPOSAL

Pesticide, spray mixture, or residue that cannot be used chemically reprocessed should be disposed of in a landfill approved for pesticides or buried in a safe place away from water supply.

#### CONTAINER DISPOSAL

Triple rinse for equivalent and after for recycling, reuse, burning or disposal in approved landfill or bury in safe place.

#### GENERAL

Consult federal, state or local disposal authorities for approved alternative procedures.

#### DIRECTIONS

Thorough coverage is essential. Repeat application, as necessary. This product is adapted to air and ground sprayer application.

**CHERRIES: Cherry Fruit Fly**—1 qt per 100 gals water. Apply at full bloom after shuck fall and every ten days prior to



# ORTHO

## PERTHANE® 4 Emulsive

### (INSECTICIDE)

Active Ingredients	By Wt
Diethyl Diphenyl Dichloroethane	40.0%
Related Compounds	5.5%
Xylene-Range Aromatic Solvent	48.0%
Inert Ingredients	6.5%
Contains 4 pounds PERTHANE per gallon	

KEEP OUT OF REACH OF CHILDREN  
**CAUTION**  
 SEE SIDE PANEL FOR ADDITIONAL  
 PRECAUTIONARY STATEMENTS.

### NET CONTENTS 5 GALS.

#### Chevron Chemical Company

Ortho Agricultural Chemicals Division  
 San Francisco, CA 94119 Richmond, CA 94804  
 Product 2869 Made in U.S.A.  
 Formulation K  
 P.A.R. 11 239 60512B

harvest. A postharvest spray is also recommended. Do not apply within 7 days of harvest.

**LETTUCE, CABBAGE, BROCCOLI, BRUSSELS SPROUT, CAULIFLOWER:** Imported Cabbage Worm, Cabbage Looper, Leafhopper—Ground Sprayers or Air Application. Apply with sufficient water to cover. Ground Application on Lettuce only: 1 to 2 qts per acre. Do not apply to lettuce within 4 days of harvest and to other crops within 3 days of harvest.

**PEARS:** Pear Psylla—Use 1 qt per 100 gals water. Apply sufficient to provide 0.1 lbs active ingredient per acre per application. Apply up to 4 cover sprays starting in May or early June. The first two cover sprays should be applied 7 to 14 days apart and the third cover spray should be applied at 30 days and apply two additional sprays 7 to 14 days apart. The fourth cover spray should not be applied closer than 7 days prior to harvest. Where necessary, control overwintering or early spring pear psylla populations, a pre-bloom application of 8 lbs per acre malathion can reduce tree injury from psylla toxin, a postharvest spray is recommended. ORTHO PERTHANE 4 Emulsive may be used in orchards where pears are interplanted with apples, but do not use the treated apples in the manufacture of apple products or for animal feed.

**SPINACH:** Leafhopper, Cabbage Looper—Ground Sprayer or Air Application. 1 qt per acre. Do not apply within 7 days of harvest.

**AMOUNT OF WATER TO USE ON LISTED RECOMMENDATIONS—(except Cherries and Pears)**

Ground Sprayers	25 to 50 gals per acre
Airplane Boom Sprayer	9 gals per acre
Airplane Brush Aerosol	4 gals per acre

Do not apply under conditions involving possible drift to food, forage or other plantings that might be damaged or the crops thereof rendered unfit for sale, use or consumption.

**CONDITIONS OF SALE:** 1. Chevron Chemical Company warrants that this material conforms to the chemical description on the label and is reasonably fit for use as directed hereon. Chevron neither makes, nor authorizes any agent or representative to make, any other warranty of FITNESS or of MERCHANTABILITY, guarantee or representation, express or implied concerning this material.

2. Critical and unforeseeable factors beyond Chevron's control prevent from eliminating all risks in connection with the use of user's crops. Such risks include, but are not limited to, damage to plants and crops to which the material is applied, lack of complete control, and damage caused by drift to other plants or crops. Such risks occur even though the product is reasonably fit for the use stated hereon and even though label directions are followed. Buyer and user acknowledge and assume all risk and liability, except those assumed by Chevron under above, resulting from handling, storage, and use of this material.

PERTHANE® trademark of Rohm and Haas Co. 99



**ORTHO**

**ORTHANE® 4  
Insecticide**

**(INSECTICIDE)**

	By Wt
1,1-Dichloro-2,2-bis(4-chlorophenyl) Ethane	40.0%
Inert Compounds	55%
Orange Aromatic Solvent	48.0%
Other Inerts	6.5%

4 pounds PERTHANE per gallon

**KEEP OUT OF REACH OF CHILDREN  
CAUTION  
SEE SIDE PANEL FOR ADDITIONAL  
PRECAUTIONARY STATEMENTS.**

**CONTENTS 5 GALS.**

**Ortho Chemical Company**  
General Chemicals Division  
P.O. Box 94119 Richmond CA 94804  
Made in USA  
EPA Reg. No. 239-CA-1  
No. 239-1365-ZB

**LETTUCE, CABBAGE, BROCCOLI, BRUSSELS SPROUTS, CAULIFLOWER:** Imported Cabbage Worm, Cabbage Loop-er, Leafhopper—Ground Sprayers or Air Application

**PEARS: Pear Psylla**

**SPINACH: Leafhopper, Cabbage Looper—Ground Sprayers or Air Application**

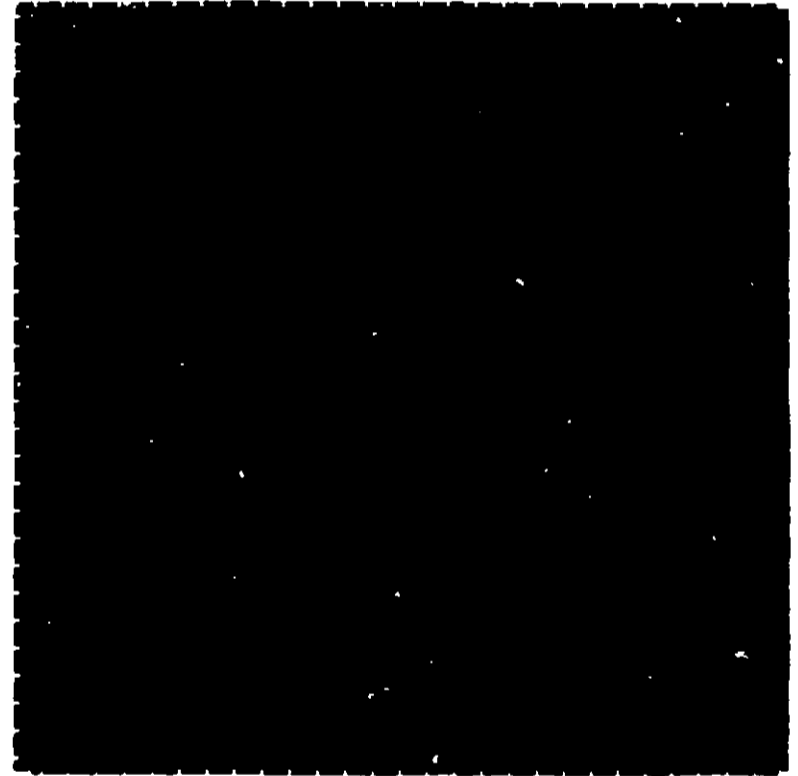
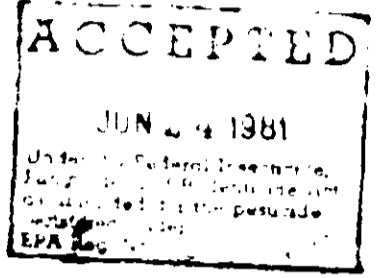
**AMOUNT OF WATER TO USE ON LISTED RECOMMENDATIONS—(except Cherries and Pears)**

- Ground Sprayers—
- Airplane Boom Sprayer—
- Airplane Brush Aerosol—

Do not apply under conditions involving possible drift to food, forage or other plantings that might be damaged or the crops thereof rendered unfit for sale, use or consumption.

**CONDITIONS OF SALE:** 1. This material is sold by Ortho Chemical Company, a subsidiary of Chevron Chemical Company, as a pesticide. It is sold under the chemical name of 1,1-dichloro-2,2-bis(4-chlorophenyl) ethane. It is not to be used as a fumigant or for any other purpose not specifically authorized by the label. The user assumes all liability for any other use of this material. 2. Critical applications of this material require special precautions. The user must read and understand the label directions and warnings. The user must use this material in accordance with the use of this material as directed on the label. The user is not to be held responsible for any damage or injury caused by the use of this material if the user has followed the label directions. The user must use this material in accordance with the label directions and warnings. The user must use this material in accordance with the label directions and warnings. The user must use this material in accordance with the label directions and warnings.

Ortho Chemical Company  
General Chemicals Division  
P.O. Box 94119 Richmond CA 94804  
Made in USA  
EPA Reg. No. 239-CA-1  
No. 239-1365-ZB



**INSECTICIDE, LIQUID, N.O.S.**