



98¢



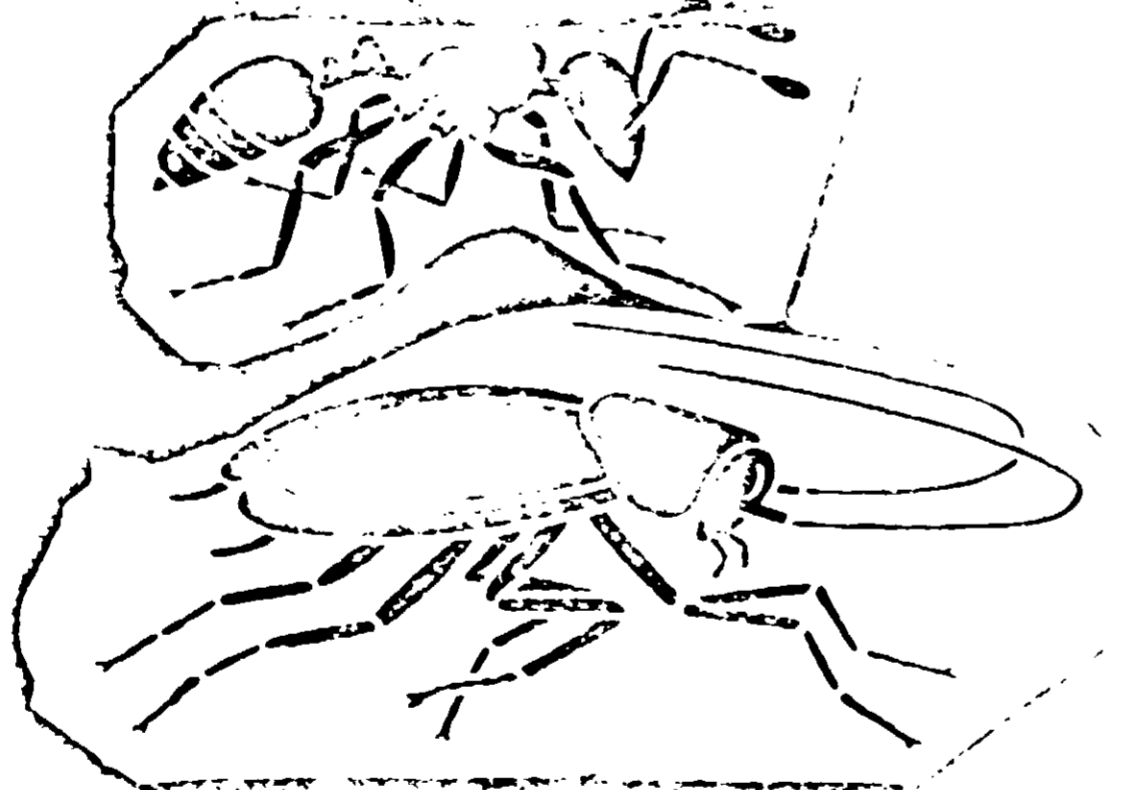
[239-907]

ORTHO

ORTHO Ant & Roach Spray

Ant & Roach Spray

Kills Resistant Roaches
Ants Spiders Silverfish
Scorpions Wasps Fleas
Gnats Carpet Beetles



RESIDUAL SURFACE SPRAY

CAUTION: Keep out of reach of children.
See back panel for additional directions.

NET WEIGHT 11½ OUNCES

READ ENTIRE LABEL. USE STRICTLY IN ACCORDANCE WITH LABEL CAUTIONS, WARNINGS AND DIRECTIONS.

TO OPERATE: Remove cap. Hold container in upright position to spray. Press nozzle directed at insects or area to be sprayed. For best results, spray infested surfaces until wet.

ANTS, RESISTANT ROACHES, FIRE ANTS, SCORPIONS, WATERBUGS, BLACK WIDOW SPIDERS, CRICKETS, SILVERFISH: Spray directly on insects where possible. Also spray their trails and wherever insects might congregate such as under sinks, drainboards, in cabinets, cracks and crevices, on baseboards, around door sills, window frames, garbage cans, garages and outhouses. For ants, also spray into their nests. Repeat as necessary.

FLIES, WASPS, JUNE BUGS, FLYING MOTHS, GNATS, CLOVER MITES: To reduce annoyance from these insects, spray outside surfaces of screens, doors, window frames and other places where these insects may enter. Also treat surfaces where these insects alight or congregate such as on porches, in garages and outhouses and around outside light fixtures. Also treat around outside house foundations.

FLEAS (Outside Dwellings)—Apply as a residual spray around outside dwellings to flea infested areas and around outside pet quarters and animal buildings. Repeat as necessary.

CARPET BEETLES: Apply as spot treatment to localized infested floor areas and baseboards. Spray directly into cracks under carpets and treat underside of carpets as well as infested areas of top surface. Also treat crevices, cracks or closets and infested areas of shelving. Repeat as necessary.

EARWIGS: Apply as a residual spray to wet infested areas around damp, shady spots, also around rocks, boards and typical hiding places, contacting insects where possible. Repeat as necessary.

CAUTION: Harmful if swallowed. Avoid breathing spray mist. May be absorbed through skin. Avoid contact with skin. In case of contact, wash immediately with soap and water. Avoid contamination of feed and food stuffs. Do not contaminate food, utensils, dishes or drinking water. Do not use on household pets or humans. Remove fish bowls and bird cages from room during spraying. Do not spray on plastics, asphalt tile or furniture. Do not use or store near heat or open flame.

WARNING: FLAMMABLE: Contents under pressure. Do not puncture. Exposure to high temperatures may cause bursting. Keep at room temperature—away from direct sun, hot radiators, stoves, hot water and other heat. Never throw container into fire or incinerator.

NOTICE: Buyer assumes all responsibility for safety and use not in accordance with directions.

Active Ingredients	By Wt.
*Naled	0.5%
Lindane—Cantharidin of Benzene Hexachloride	0.25%
Petroleum Distillate	95.8%
Inert Ingredients	3.35%
*1, 2-dibromo-2, 2-dichloroethyl dimethyl phosphate (DBM) U.S. Pat. No. 2,971,852	

Manufactured for
Chevron Chemical Company
ORTHO DIVISION, San Francisco, Calif. 94120
Lafayette, Calif., Des Plaines, Ill.
Perth Amboy, N.J., Atlanta, Ga.

Form 4901-R Product No. 1000-7 USA Reg. No. 239-907 Made in U.S.A.

ACCEPTED
Oct 21