



ORTHO Rose & Floral Dust Formula IV

PRECAUTIONARY STATEMENTS

HAZARDS TO HUMANS & DOMESTIC ANIMALS

CAUTION: Causes eye irritation. May be harmful if swallowed. May cause allergic skin reactions. Avoid contact with eyes and clothing. Wash thoroughly with soap and water after handling.

STATEMENT OF PRACTICAL TREATMENT: In case of eye contact, wash eyes immediately with fresh water for 15 minutes. See a doctor if irritation persists. If swallowed, give water or milk to drink and telephone for medical advice. Consult medical personnel before inducing vomiting. If medical advice cannot be obtained, then take person and product container to the nearest medical emergency treatment center or hospital. **Note to Physicians:** Emergency information—call (415) 233-3737.

ENVIRONMENTAL HAZARDS: This pesticide is extremely toxic to fish and toxic to aquatic invertebrates. Do not apply directly to water or wetlands (swamps, bogs, marshes and potholes). Drift and runoff from treated areas may be hazardous to aquatic organisms in neighboring areas. Do not clean equipment or dispose of equipment washwaters in a manner that will contaminate water resources.

This product is toxic to bees and should not be applied when bees are actively visiting the area.

DIRECTIONS FOR USE

It is a violation of Federal law to use this product in a manner inconsistent with its labeling. **READ ENTIRE LABEL. USE STRICTLY IN ACCORDANCE WITH LABEL PRECAUTIONARY STATEMENTS AND DIRECTIONS.**

Wear chemical resistant gloves when using outdoors. Wear long pants and long-sleeved shirt and apply with the wind to your back. Wash nondisposable gloves thoroughly with soap and water before removing. Clothing worn while handling this product must be laundered separately from other clothing before reusing.

ORTHO Rose & Floral Dust Formula IV may be used as a dust or spray. For best results, dust or spray in early morning or late evening when temperature is low and air is still. Apply so all exposed parts of plants are contacted, especially upper and lower leaf surfaces. Do not apply to crops to be used for food or feed.

As a Spray: Mix 3 to 4 Tablespoonfuls in a little water to make a thin paste, add to 1 gallon water and agitate during application. Make new dilution for each use.

As a Dust: Apply a light film of dust to all parts of plant. Do not over-apply.

For Insect Control: Apply when insects first appear and repeat at 5 to 10 day intervals or as necessary.

For Disease Control: Start program of dusting as soon as foliage appears. Repeat at 1 to 2 week intervals for best protection.

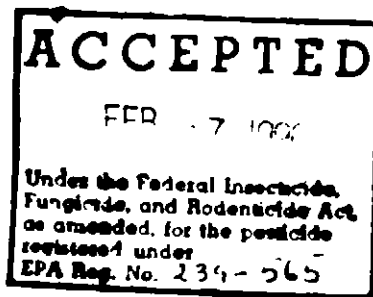
PLANTS	INSECTS	DISEASES
Roses, Flowers	Aphids, Thrips, Leafhoppers, Japanese Beetle, Cucumber Beetles, Flea Beetles, Spittlebugs	Blackspot (Roses); Powdery Mildew (Tuberous Begonias); Rust & Alternaria Leaf Spot (Carnations); Botrytis Flower Blight (Chrysanthemums)

STORAGE AND DISPOSAL

STORAGE: Keep pesticide in original container. Do not put concentrate or dilute into food or drink containers. Avoid contamination of feed and foodstuffs. Store in a cool, dry place, preferably in a locked storage area. Do not store diluted spray.

DISPOSAL: PRODUCT—Partially filled canister may be disposed of by securely wrapping original container in several layers of newspaper and discard in trash. **CONTAINER**—Do not reuse canister. Discard canister in trash.

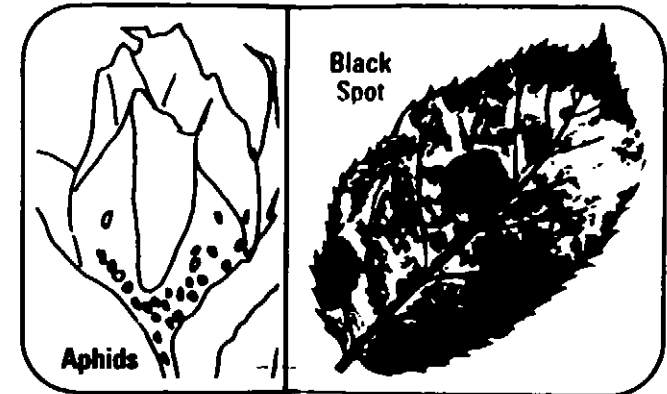
NOTICE: Buyer assumes all responsibility for safety and use not in accordance with directions.



ORTHO

Rose & Floral Dust Formula IV

A Multi-Purpose Garden Dust/Spray
that Controls Insects and Diseases
on Roses and Flowers.



Active Ingredients	By Wt.
*Captan	4.90%
*Related Derivatives	0.00%
**Methoxychlor, 1,1,1-trichloro-2,2-bis	
(p-methoxyphenyl) ethane	5.00%
*Rotenone	0.75%
Other Associated Resins	0.75%
Inert Ingredients	88.50%
*N-trichloromethyl-4-cyclohexene-1,2-dicarboximide	
**Equivalent to 4.4% 1,1,1-trichloro-2,2-bis	
(p-methoxyphenyl) ethane and 0.6% other isomers and related compounds	

Keep out of reach of children



ORTHO Rose & Floral Dust Formula IV

ACCEPTED
FEB - 7 1990

Under the Federal Insecticide, Fungicide, and Rodenticide Act as amended, for the pesticide registered under EPA Reg. No. 239-565

ORTHO

Rose & Floral Dust Formula IV

PRECAUTIONARY STATEMENTS

HAZARDS TO HUMANS & DOMESTIC ANIMALS

CAUTION: Causes eye irritation. May be harmful if swallowed. May cause allergic skin reactions. Avoid contact with eyes and clothing. Wash thoroughly with soap and water after handling.

STATEMENT OF PRACTICAL TREATMENT: In case of eye contact, wash eyes immediately with fresh water for 15 minutes. See a doctor if irritation persists. If swallowed, give water or milk to drink and telephone for medical advice. Consult medical personnel before inducing vomiting. If medical advice cannot be obtained, then take person and product container to the nearest medical emergency treatment center or hospital. **Note to Physicians:** Emergency Information - call (415) 233-3737.

ENVIRONMENTAL HAZARDS: This pesticide is extremely toxic to fish and toxic to aquatic invertebrates. Do not apply directly to water or wetlands (swamps, bogs, marshes and potholes). Drift and runoff from treated areas may be hazardous to aquatic organisms in neighboring areas. Do not clean equipment or dispose of equipment washwaters in a manner that will contaminate water resources. This product is toxic to bees and should not be applied when bees are actively visiting the area.

DIRECTIONS FOR USE

It is a violation of Federal law to use this product in a manner inconsistent with its labeling. **READ ENTIRE LABEL. USE STRICTLY IN ACCORDANCE WITH LABEL PRECAUTIONARY STATEMENTS AND DIRECTIONS.**

Wear chemical resistant gloves when using outdoors. Wear long pants and long sleeved shirt and apply with the wind to your back. Wash nondisposable gloves thoroughly with soap and water before removing. Clothing worn while handling this product must be laundered separately from other clothing before reusing. **Refillable Duster:** Remove top closure to refill.

ORTHO Rose & Floral Dust Formula IV is especially formulated for the control of insects and diseases. Do not apply to crops to be used for food or feed.

DIRECTIONS: To apply just squeeze. Tap bottom lightly and shake before first use. **DUST AT ANY ANGLE** for best results, dust in early morning or late evening when the temperature is low and the air is still. Apply dust so all exposed parts of plants are contacted, especially upper and lower leaf surfaces.

For Insect Control: Apply when insects first appear and repeat at 5 to 10 day intervals or as necessary. **For Disease Control:** Start program of dusting as soon as foliage appears. Repeat at 1 to 2 week intervals for best protection.

PLANTS

INSECTS

DISEASES

Roses,
Flowers

Aphids, Thrips, Leafhoppers,
Japanese Beetle, Cucumber Bee
flies, Flea Beetles, Spittlebugs

Blackspot (Roses), Powdery Mildew (Tuberous Begonias); Rust
& Alternaria Leaf Spot (Carnations); Botrytis Flower Blight
(Chrysanthemums)

STORAGE AND DISPOSAL

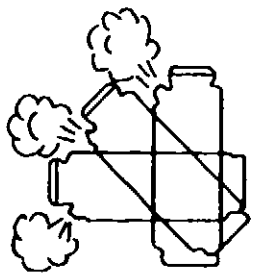
STORAGE: Avoid contamination of feed and food stuffs. Keep pesticide in original container. Do not put into food or drink containers. Replace cap and store in a cool, dry place, preferably in a locked storage area.

DISPOSAL - PRODUCT: Partially filled duster may be disposed of by securely wrapping original container in several layers of newspaper and discard in trash. **CONTAINER:** When empty duster is discarded, replace cap and discard in trash.

NOTICE: Buyer assumes all responsibility for safety and use not in accordance with directions.

**DUST
AT ANY
ANGLE**

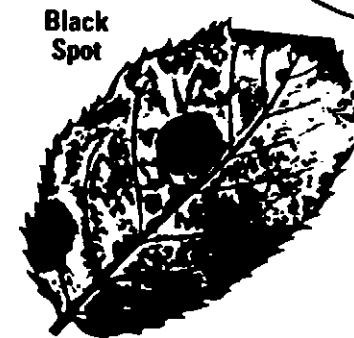
**WILL NOT
CLOG**



CONTROLS INSECTS AND DISEASES



Aphids



Black
Spot

**WILL NOT
CLOG**

Active Ingredients

*Captan 4.90%
*Related Derivatives 0.10%
**Methoxychlor 1,1,1 trichloro 2,2 bis (p methoxyphenyl) ethane 5.00%
Rotenone 0.75%
Other Associated Resins 0.75%
Inert Ingredients 88.50%
*N trichloromethylthio 4 cyclohexene 1,2 dicarboximide
**Equivalent to 4.4% 1,1,1 trichloro 2,2 bis (p methoxy phenyl) ethane and 0.6% other isomers and related compounds.

By Wt

4.90%
0.10%
5.00%
0.75%
0.75%
88.50%

Keep out of reach of children

CAUTION

See back panel for additional precautionary statements.

NET WT. 10 OZ.

Chevron Chemical Company © 1985
Ortho Consumer Products Division
P.O. Box 5847 San Ramon CA 94583 0947
Form 9537 V Product 1584 Made in USA
EPA Reg. No. 239 565 EPA Est. 239 MD 1

