



UNITED STATES ENVIRONMENTAL PROTECTION AGENCY  
WASHINGTON, DC 20460

OFFICE OF CHEMICAL SAFETY  
AND POLLUTION PREVENTION

July 17, 2023

Carrie M. Tackema  
Sr. Regulatory Manager  
Nufarm, Inc.  
11901 S. Austin Ave.  
Alsip, IL 60803

Subject: Registration Review Label Mitigation for Bifenthrin  
Product Name: Bifenthrin 0.1% Granule  
EPA Registration Number: 228-494  
Application Date: 04-26-2021  
Decision Number: 573412

Dear Carrie Tackema:

The Agency, in accordance with the Federal Insecticide, Fungicide and Rodenticide Act (FIFRA), as amended, has completed reviewing all the information submitted with your application to support the Registration Review of the above referenced product in connection with the Bifenthrin Interim Decision, and has concluded that your submission is acceptable. The label referred to above, submitted in connection with registration under FIFRA, as amended, is acceptable.

Should you wish to add/retain a reference to the company's website on your label, then please be aware that the website becomes labeling under the Federal Insecticide Fungicide and Rodenticide Act and is subject to review by the Agency. If the website is false or misleading, the product would be misbranded and unlawful to sell or distribute under FIFRA section 12(a)(1)(E). 40 CFR 156.10(a)(5) list examples of statements EPA may consider false or misleading. In addition, regardless of whether a website is referenced on your product's label, claims made on the website may not substantially differ from those claims approved through the registration process. Therefore, should the Agency find or if it is brought to our attention that a website contains false or misleading statements or claims substantially differing from the EPA approved registration, the website will be referred to the EPA's Office of Enforcement and Compliance.

A stamped copy of your labeling is enclosed for your records. This labeling supersedes all previously accepted labeling. You must submit one copy of the final printed labeling before you release the product for shipment with the new labeling. In accordance with 40 CFR 152.130(c), you may distribute or sell this product under the previously approved labeling for 12 months from the date of this letter. After 12 months, you may only distribute or sell this product if it bears this new revised labeling or subsequently approved labeling. "To distribute or sell" is defined under FIFRA section 2(gg) and its implementing regulation at 40 CFR 152.3.

Page 2 of 2  
EPA Reg. No. 228-494  
Decision No. 573412

If you have any questions about this letter, please contact Cathryn Britton by phone at 202-566-2339, or via email at [britton.cathryn@epa.gov](mailto:britton.cathryn@epa.gov).

Sincerely,

A handwritten signature in cursive script that reads "Cathryn Britton".

Cathryn Britton, Chief  
Risk Management and Implementation Branch 5  
Pesticide Re-Evaluation Division  
Office of Pesticide Programs

Enclosure

# BIFENTHRIN 0.1% GRANULE

FOR OUTDOOR RESIDENTIAL LAWN, HOME PERIMETER, ORNAMENTAL &  
FLOWER GARDENS, AND HOME GARDEN USE ONLY

<b>ACTIVE INGREDIENT:</b>	<b>By Wt.</b>
Bifenthrin* .....	0.1%
<b>OTHER INGREDIENTS</b> .....	<u>99.9%</u>
<b>TOTAL:</b> .....	100.0%

\*Cis isomers 97% minimum, trans isomers 3% maximum.

**KEEP OUT OF REACH OF CHILDREN**  
**CAUTION**  
 SEE ADDITIONAL PRECAUTIONARY STATEMENTS ON BACK OF BAG.  
 OR  
 SEE (BACK PANEL, BOOKLET, SIDE PANEL) FOR ADDITIONAL PRECAUTIONARY STATEMENTS.

For Chemical Spill, Leak, Fire, or Exposure, Call CHEMTREC (800) 424-9300  
 For Medical Emergencies Only, Call (877) 325-1840  
 [For Product Inquiry, Call (XXX) XXX-XXXX]

**IMPORTANT! ALWAYS STORE THIS PRODUCT OUT OF REACH  
 OF PETS AND DOMESTIC ANIMALS**

**A C C E P T E D**  
 07/17/2023  
 Under the Federal Insecticide, Fungicide  
 and Rodenticide Act as amended, for the  
 pesticide registered under  
 EPA Reg. No. 228-494

[Nufarm: Grow a better tomorrow]  
[Grow a better tomorrow]

EPA REG. NO. 228-494  
EPA EST. NO. \_\_\_\_\_

Manufactured [by] for  
NUFARM AMERICAS INC.  
11901 S. Austin Avenue  
Alsip, IL 60803



NET WEIGHT: \_\_\_\_\_ Lbs. ( \_\_\_\_\_ Kg)

**PRECAUTIONARY STATEMENTS  
HAZARDS TO HUMANS AND DOMESTIC ANIMALS  
CAUTION**

Harmful if absorbed through skin. Causes moderate eye irritation. Avoid contact with skin, eyes or clothing. Wash thoroughly with soap and water after handling and before eating, drinking, chewing gum using tobacco or using the toilet. Remove and wash contaminated clothing before reuse.

<b>FIRST AID</b>	
<b>IF ON SKIN OR CLOTHING:</b>	<ul style="list-style-type: none"> <li>• Take off contaminated clothing.</li> <li>• Rinse skin immediately with plenty of water for 15 to 20 minutes.</li> <li>• Call a poison control center or doctor for treatment advice.</li> </ul>
<b>IF IN EYES:</b>	<ul style="list-style-type: none"> <li>• Hold eye open and rinse slowly and gently with water for 15 to 20 minutes.</li> <li>• Remove contact lenses, if present, after the first 5 minutes, then continue rinsing eye.</li> <li>• Call a poison control center or doctor for treatment advice.</li> </ul>
<b>HOT LINE NUMBER</b>	
Have the product container or label with you when calling a poison control center or doctor, or going for treatment. You may also contact 1-877-325-1840 for emergency medical treatment information.	
<b>NOTE TO PHYSICIAN</b>	
This product is a pyrethroid. If large amounts have been ingested, milk, cream or other digestible fats and oils may increase absorption and so should be avoided.	

**ENVIRONMENTAL HAZARDS**

This pesticide is extremely toxic to fish and aquatic invertebrates. To protect the environment, do not allow pesticide to enter or run off into storm drains, drainage ditches, gutters or surface waters. Applying this product in calm weather when rain is not predicted for the next 24 hours will help to ensure that wind or rain does not blow or wash pesticide off the treatment area. Sweeping any product that lands on a driveway, sidewalk, or street, back onto the treated area of the lawn or garden will help to prevent run off to water bodies or drainage systems.

**DIRECTIONS FOR USE**

It is a violation of Federal law to use this product in a manner inconsistent with its labeling. For outdoor use only.

This product is a high-performance product and is:

- Virtually Odor-free.
- Fast Acting.
- Easy-to-Use.
- Kills Ants, Fleas, Spiders, Ticks & Other Listed Insects.
- Not harmful to grasses.
- For use on lawns, home perimeter, ornamental & flower gardens.
- Kills Listed Lawn & Garden pests/insects/bugs.
- Kills/controls listed pests/insects/bugs in lawns & landscapes.

This product is designed for use as a ready-to-use granular insecticide to control listed insects and spiders on lawns, home perimeter, ornamental & flower gardens. See specific pests for precise level. Irrigating or watering by 0.1 to 0.5 inches immediately after application generally improves the effectiveness of this product. Please read the following "Directions for Use" carefully and fully before applying this product.

In New York State, this product may **NOT** be applied to any grass or turf area (lawns) within 100 feet of a water body (lake, pond, river, stream, wetland, or drainage ditch).

In New York State, do make a single repeat application of this product if there are signs of renewed insect activity, but not sooner than two weeks after the first application.

**DO NOT** allow children or pets to enter the area until dry.

For soil or foliar applications, do not apply by ground within 25 feet of lakes, reservoirs, rivers, permanent streams, marshes or natural ponds, estuaries and commercial fish farm ponds.

**DO NOT** apply the product into fish pools, ponds, streams, or lakes. Do not apply directly to sewers or storm drains, or to any area like a drain or gutter where drainage to sewers, storm drains, water bodies, or aquatic habitat can occur.

**DO NOT** allow the product to enter any drain during or after application.

**DO NOT** apply directly to impervious horizontal surfaces such as sidewalks, driveways, and patios except as a spot or crack-and-crevice treatment.

**DO NOT** apply or irrigate to the point of runoff.

Apply this product directly to the lawn or garden area. Water treated area as directed on this label.

For applications at rates above 0.34 lbs bifenthrin/A (3.4 lbs product/A), users must water the treated area immediately after application. Spot treatments must not exceed 2 square feet in size (2 ft. by 1 ft. or 4 ft. by 0.5 ft.)

**DO NOT** apply when the wind speed is greater than 15 mph.

**DO NOT** make applications during rain. Avoid making applications when rainfall is expected before the product has sufficient time to dry (minimum 4 hours).

Rainfall within 24 hours after application may cause unintended runoff of pesticide application.

**LAWN, HOME PERIMETER, ORNAMENTAL & FLOWER GARDENS  
SURFACE-FEEDING INSECTS**

Use this product for the control of ants, including Carpenter, Red Harvester, Odorous Pyramid, Pharaoh (Sugar) and Fire Ants\*, Foraging Fire Ants, Armyworms (including Fall Armyworms), Billbug (including Bluegrass Billbug), Chiggers, Chinch Bugs, Cockroaches, Crickets, Cutworms (including Black Cutworms), Earwigs, Grasshoppers, Mealybugs, Pillbugs, Silverfish, Sod Webworms (Lawn Moth), Sowbugs, and Weevils (including Hyperodes and Bluegrass). Uniformly apply 1.2 to 2.4 pounds over a 1,000 square feet area by using any hand- or power-operated gravity or rotary type spreader designed for the application of granular materials. A 12-pound bag will treat a 5,000 to 10,000 square feet area. *Optional language:* [XX pound bag should treat XX,XXX square feet. This would be used for a bag size other than 12 pounds. The rate of application i.e. 1.2 to 2.4 pounds of product over 1,000 square feet (or 2 to 4 ounces of product over 100 square feet) will remain the same.] Treat when insects first appear and retreat as necessary. Repeat application is necessary only if there are signs of renewed insect activity. Repeat application must be limited to no more than once per seven days.

\*Aids in control

**Argentine Ants, Black Turf Ants, Black Turfgrass Ataenius, Fleas (including Cat Fleas), Leafhoppers, Spiders (including Brown Recluse spiders) and Ticks (including Brown Dog Ticks)**

Uniformly apply 2.4 pounds over a 1,000 sq. ft. area (or 3.84 ounces [4 ounces] over a 100 sq. ft. area). Best results are obtained if the treated area is thoroughly watered immediately after application.

**Centipedes, Millipedes, Pavement Ants**

Uniformly apply 4.8 pounds over a 1,000 sq. ft. area (or 7.68 ounces [8 ounces] over a 100 sq. ft. area). Best results are obtained if the treated area is thoroughly watered immediately after application.

**Mole Crickets (including Tawny Mole Crickets)**

Uniformly apply 2.4 to 4.8 pounds over a 1,000 sq. ft. area (or 3.84 to 7.68 ounces [4 to 8 ounces] over a 100 sq. ft. area). For best results: treat in late spring, and water the treated area immediately after application.

**For Fire Ant Mounds**

To control Fire ants, uniformly apply 1 tablespoon or 3 teaspoons\*\* of this product to the surface of each mound. For best results, 1) apply in cool weather, 65 to 80°F, or in early morning or late evening hours. 2) avoid disturbing ants, 3) treat new mounds as they appear and 4) thoroughly water the treated area immediately after application.

\*\*Food utensils such as tablespoons/teaspoons must not be used for food purposes after use in measuring pesticides.

**Home Vegetable Gardens**

How to Apply

A single application may be applied just prior to planting or after plants emerge and worked into the top 4 to 6 inches of soil. Use 5 cups (1.2 lbs.) of product for a 500 sq. ft. area.

Vegetables	Days to wait to harvest	Pests
Green Peas, Edible Pods (Sugar Snap Peas, Snow Peas) Green Beans (Wax Beans, Snap Beans) Dry Beans (Black-eyed Peas, Cowpea)	3 Days	Ants, cutworms, crickets, earwigs, grasshoppers, grubs, seed maggots, weevils and wireworms.
Sweet Corn	1 Day	Ants, armyworm, cutworms, crickets, earwigs, European corn borer, fall armyworm, grasshoppers, southwestern corn borer and weevils.
Broccoli, Brussels Sprouts, Cabbage, Cauliflower, Cavalo Broccoli, Chinese Broccoli, Chinese Cabbage, Kohlrabi	7 Days	Ants, cutworms, crickets, earwigs, grasshoppers, grubs, seed maggots, weevils and wireworms.
<b>Cucurbit Vegetables</b> Chayote, Citron melon, Cucumber, Edible Gourd Muskmelon (Cantaloupe, casaba, Crenshaw melon, Golden melon, Honeydew Melon, Pineapple melon, Santa Claus melon, Snake melon) Pumpkin, Summer squash (Crookneck, Scallop, Straightneck, Zucchini) Winter squash (Butternut, Calabaza, Hubbard including Acorn and Spaghetti) Watermelon	3 Days	Ants, cutworms, crickets, earwigs, grasshoppers, grubs, seed maggots, weevils and wireworms.
Tomatoes	1 Day	Ants, cutworms, crickets, earwigs, grasshoppers, grubs, seed maggots, weevils and wireworms.
Peppers	7 Days	Ants, cutworms, crickets, earwigs, grasshoppers, grubs, seed maggots, weevils and wireworms.
Eggplant	7 Days	Ants, cutworms, crickets, earwigs, grasshoppers, grubs, seed maggots, weevils and wireworms.
Head Lettuce	7 Days	Ants, cutworms, crickets, earwigs, grasshoppers, grubs, seed maggots, weevils and wireworms.

Home Vegetable Garden Spreader Tips		
Spreader	5 cups (1.2 lbs.) of product for 500 sq. ft.	Directions
Scotts AccuGreen® Drop Spreader	3-1/4	Operate spreader the longest way of the garden area. Overlap wheel marks to ensure uniform feeding. Shut off spreader when you have reached the header strips or stopped.
Scotts SpeedyGreen® Rotary	2	Shut off spreader anytime you stop. For complete coverage make each pass about five feet from the previous one, so some overlapping occurs.
Ferti-lome® YARD-RIGHT Hand Held Spreader	2	(1) Make certain setting selector is in closed position. Fill hopper with 1.2 lbs. of product for every 500 sq. ft. of treatment area. (2) Adjust selector to the #2 setting. (3) Apply product evenly over area walking at a steady pace while turning hand crank. If you apply a second application, spread at right angle to first. (4) The spreader will apply a uniform swath 6 ft. to 12 ft. wide. Note the path of the product spread and adjust for the return swath to avoid overlapping product."

When using other spreaders, calibrate the spreader settings based on the manufacturer's recommendations.

### INSECT RESISTANCE MANAGEMENT

For resistance management, this product contains bifenthrin, a Group 3A pyrethroid insecticide. Repeated and exclusive use of this product or other Group 3A insecticides may lead to the buildup of resistant strains of insects in some crops.

Some insects are known to develop resistance to products used repeatedly for control. Because the development of resistance cannot be predicted, this product may be used as part of a resistance management strategy established for the use area. These strategies may include incorporation of cultural and biological control practices, alternation of mode-of-action classes of insecticides on succeeding generations and targeting the most susceptible life stage. Consult your local or state agricultural authorities for details.

Unless directed otherwise in the specific crop/pest sections of this label, the best practices are to follow these instructions to delay the development of insecticide resistance:

- Avoid using the same mode of action (IRAC group number) on consecutive generations of insect pests.
- Apply this product using a "treatment window" approach to avoid exposure of successive insect pest generations to the same mode of action.
- A "treatment window" is defined as the period of residual activity provided by single or sequential applications of products with the same mode of action. This "treatment window" should not exceed approximately the length of one generation of the target pest.
- Within the "treatment window", make no more than 2 applications of this product or other product that contains a Group 3A insecticide within a single generation of the target pest on a crop or within a 30-day period to the same insect species on a crop.
- Following a "treatment window", rotate to a treatment window of effective products with a different mode of action. This window should approximate the duration of one generation of the target pest.
- Target the most susceptible insect life stages, whenever possible.
- Do not use less than the labeled rates of this product when applied alone or in tank mixtures.
- Monitor insect populations for product effectiveness.

If resistance to this product develops in your area, this product or other products with a similar mode of action, may not provide adequate control. If poor performance cannot be attributed to improper application or extreme weather conditions, a resistant strain of insect may be present. If you experience difficulty with control and resistance is a reasonable cause, immediately consult your local Nufarm representative or agricultural advisor for the best alternate method of control for your area. For additional information on insect resistance monitoring, visit the Insecticide Resistance Action Committee (IRAC) on the web at <http://www.irac-online.org>.

### STORAGE AND DISPOSAL

**DO NOT** contaminate water, food or feed by storage or disposal.

**PESTICIDE STORAGE:** Keep out of reach of children and animals. Store in original container only. Store in a cool, dry place and avoid excess heat. Carefully open containers when ready to use and always reseal tightly immediately following use to prevent spillage or contamination.

**CONTAINER DISPOSAL:** **If empty:** Nonrefillable container. Do not reuse or refill this container. Place in trash or offer for recycling if available. **If partly filled:** Call your local solid waste agency for disposal instructions. Do not pour or dispose down-the-drain or sewer. Call your local solid waste agency for local disposal options.

### WARRANTY DISCLAIMER

The directions for use of this product must be followed carefully. TO THE EXTENT CONSISTENT WITH APPLICABLE LAW, (1) THE GOODS DELIVERED TO YOU ARE FURNISHED "AS IS" BY MANUFACTURER OR SELLER AND (2) MANUFACTURER AND SELLER MAKE NO WARRANTIES, GUARANTEES, OR REPRESENTATIONS OF ANY KIND TO BUYER OR USER, EITHER EXPRESS OR IMPLIED, OR BY USAGE OF TRADE, STATUTORY OR OTHERWISE, WITH REGARD TO THE PRODUCT SOLD, INCLUDING, BUT NOT LIMITED TO MERCHANTABILITY, FITNESS FOR A PARTICULAR PURPOSE, USE, OR ELIGIBILITY OF THE PRODUCT FOR ANY PARTICULAR TRADE USAGE. UNINTENDED CONSEQUENCES, INCLUDING BUT NOT LIMITED TO INEFFECTIVENESS, MAY RESULT BECAUSE OF SUCH FACTORS AS THE PRESENCE OR ABSENCE OF OTHER

MATERIALS USED IN COMBINATION WITH THE GOODS, OR THE MANNER OF USE OR APPLICATION, INCLUDING WEATHER, ALL OF WHICH ARE BEYOND THE CONTROL OF MANUFACTURER OR SELLER AND ASSUMED BY BUYER OR USER. THIS WRITING CONTAINS ALL OF THE REPRESENTATIONS AND AGREEMENTS BETWEEN BUYER, MANUFACTURER AND SELLER, AND NO PERSON OR AGENT OF MANUFACTURER OR SELLER HAS ANY AUTHORITY TO MAKE ANY REPRESENTATION OR WARRANTY OR AGREEMENT RELATING IN ANY WAY TO THESE GOODS.

#### **LIMITATION OF LIABILITY**

TO THE EXTENT CONSISTENT WITH APPLICABLE LAW, IN NO EVENT SHALL MANUFACTURER OR SELLER BE LIABLE FOR SPECIAL, INCIDENTAL, OR CONSEQUENTIAL DAMAGES, OR FOR DAMAGES IN THEIR NATURE OF PENALTIES RELATING TO THE GOODS SOLD, INCLUDING USE, APPLICATION, HANDLING, AND DISPOSAL. TO THE EXTENT CONSISTENT WITH APPLICABLE LAW, MANUFACTURER OR SELLER SHALL NOT BE LIABLE TO BUYER OR USER BY WAY OF INDEMNIFICATION TO BUYER OR TO CUSTOMERS OF BUYER, IF ANY, OR FOR ANY DAMAGES OR SUMS OF MONEY, CLAIMS OR DEMANDS WHATSOEVER, RESULTING FROM OR BY REASON OF, OR ARISING OUT OF THE MISUSE, OR FAILURE TO FOLLOW LABEL WARNINGS OR INSTRUCTIONS FOR USE, OF THE GOODS SOLD BY MANUFACTURER OR SELLER TO BUYER. ALL SUCH RISKS SHALL BE ASSUMED BY THE BUYER, USER, OR ITS CUSTOMERS. TO THE EXTENT CONSISTENT WITH APPLICABLE LAW, BUYER'S OR USER'S EXCLUSIVE REMEDY, AND MANUFACTURER'S OR SELLER'S TOTAL LIABILITY SHALL BE FOR DAMAGES NOT EXCEEDING THE COST OF THE PRODUCT.

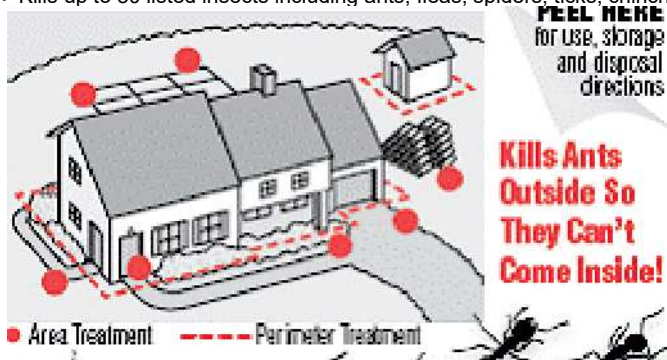
**If you do not agree with or do not accept any of directions for use, the warranty disclaimers, or limitations on liability, do not use the product, and return it unopened to the Seller, and the purchase price will be refunded.**

(RV[mmdyy])

### [Optional Text]

This product is a high-performance product and is:

- [Virtually Odor-free]
- [Fast Acting]
- [Easy-to-Use]
- [Not harmful to grasses]
- For use on lawns, ornamentals, home perimeter and flower gardens.
- Kills/controls listed pests/insects/bugs in lawns & landscapes.
- Kills Ants, Fleas, Ticks and other listed pests/insects/bugs.
- Controls/kills listed lawn-destroying/lawn-invading pests/insects/bugs.
- Covers/Treats up to 8,300 sq. ft. per 10 lbs.
- Covers up to 16,600 sq. ft. per 20 lbs.
- Covers up to 5,000 sq. ft. per 6 lbs.
- 17.5 [oz][ounce][ packaging][container][bag]:] [Treats][Covers] [up to] 875 [sq. ft.][square feet]
- 3 [lb][pound][packaging][container][bag]:] [Treats][Covers] [up to] 2,500 [sq. ft.][square feet]
- Creates a pest/insect/bug barrier around your home.
- Exceptional Value!
- Kills Chinch Bugs, Mole Crickets, Grubs and Cutworms, plus other listed insects.
- Kills listed surface and sub-surface pests/insects/bugs that ruin your lawn.
- Ready-to-use.
- Easy to spread.
- Soil-penetrating formula reaches deep below ground.
- Deep-reaching formula that kills listed lawn-destroying insects.
- Provides a barrier of protection around your home.
- Guaranteed to work or your money back.
- Satisfaction Guaranteed or Your Money Back.
- Satisfaction Guaranteed.\*  
\* Or Your Money Back
- The smart solutions to pest/insect/bug problems.
- Solves your pest/insect/bug problems fast.
- Outdoor use only (icon).
- Keeps Listed [Lawn] Insects Away for Up to 2 Months [8 weeks].
- Kills Listed Tough Lawn Insects [and Keeps Them Away for Up to 2 Months [8 weeks]].
- Kills listed insects/bugs on contact
- Kills in 24 hours
- Kills overnight
- Kills up to 50 listed insects
- Kills Ants Outside so They Can't Come Inside!
- Easy to Use Resealable Shaker Bag
- Resealable Bag
- Slide zipper tab to open bag (with simple illustration showing bag with notch to slide and arrow)
- Pull apart to break apart (with simple illustration showing bag pulled apart with arrows)
- Kills Listed Surface & Sub-Surface Insects
- Deep Reaching Formula
- Kills Grubs & Mole Crickets
- Ant & Spider Killer
- Kills Ants and Spiders
- Kills up to 50 listed insects including ants, fleas, spiders, ticks, chinch bugs, mole crickets, grubs and cutworms



### Ornamental Flower Beds (Outdoors)

**Pests Controlled:** Ants, crickets, earwigs, grasshoppers, spiders and ticks.

**How to Apply:** Evenly apply 1.2 lb. of product for every 500 sq. ft. area (or 2 ounces for every 50 sq. ft. area). Repeat application as necessary only if there are signs of renewed insect activity. Repeat application must be limited to no more than once per seven days.



**Home Invading Insects: Barrier Treatment Around House Foundation (Outdoors)**

**Pests Controlled:** Ants, chiggers, crickets, earwigs, grasshoppers, spiders and ticks.

**How to Apply:** Evenly apply a 2-foot band of granules next to the house foundation. Use 1.2 lb. for each 500 sq. ft. (2 ft. X 250 ft.)(or 2 ounces for each 50 sq. ft.(2 ft. x 25 ft.)). If necessary, repeat applications every 2 weeks only if there are signs of renewed insect activity.

SPREADER TIPS		
Spreader	Spreader Settings covers x,xxx sq. ft.	Directions
Scotts Drop Spreaders	?	Mow lawn first if grass is tall enough to touch the bottom of the spreader. First apply two header strips. Operate spreader the longest way of the lawn. Overlap wheel marks to ensure uniform feeding. Shut off spreader when you have reached the header strips or stopped.
Scotts Easy Green® Rotary	??	Side shut-off lever to the right; application automatically starts and stops when you do. For complete coverage make each pass about 30 inches from the previous one so some overlapping occurs.
Scotts SpeedyGreen® Rotary	?	Shut off spreader anytime you stop. For complete coverage make each pass about five feet from the previous one, so some overlapping occurs. Avoid applying this product on flower, vegetable and shrub plantings.

**(Bag Size specific)**

SPREADER TIPS				
Spreader	Spreader Settings Pounds of Product per 500/1,000 sq. ft.			Directions
	0.5 / 1.2	1.2 / 2.4	2.4 / 4.8	
Scotts AccuGreen® Drop Spreader	3-1/4	4-1/2	6	Mow lawn first if grass is tall enough to touch the bottom of the spreader. First apply two header strips. Operate spreader the longest way of the lawn. Overlap wheel marks to ensure uniform feeding. Shut off spreader when you have reached the header strips or stopped.
Scotts SpeedyGreen® Rotary	2	2-3/4	4-1/2	Shut off spreader anytime you stop. For complete coverage make each pass about five feet from the previous one, so some overlapping occurs. Avoid applying this product on flower, vegetable and shrub plantings.

When using other spreaders, calibrate the spreader settings based on the manufacturer's recommendations. This product is a high-performance product, and is:

- The smart solutions to pest/insect/bug problems.
- Solves your pest/insect/bug problems fast.
- Keeps [Lawn] Insects Away for Up to 2 Months [8 weeks].
- Kills Tough Lawn Insects [and Keeps Them Away for Up to 2 Months [8 Weeks]].

**Vegetable Garden Insect Control**

**How to Apply**

A single application may be applied just prior to planting or after plants emerge and worked into the top 4 to 6 inches of soil. Use 5 cups (1.2 lbs.) of product for a 500 sq. ft. area

Vegetables	Days to wait to harvest	Pests
Green Peas, Edible Pods (Sugar Snap Peas, Snow Peas) Green Beans (Wax Beans, Snap Beans) Dry Beans (Black-eyed Peas, Cowpea)	3 Days	Ants, cutworms, crickets, earwigs, grasshoppers, grubs, seed maggots, weevils and wireworms.
Sweet Corn	1 Day	Ants, armyworm, cutworms, crickets, earwigs, European corn borer, fall armyworm, grasshoppers, southwestern corn borer and weevils.
Broccoli, Brussels Sprouts, Cabbage, Cauliflower, Cavalo Broccoli, Chinese Broccoli, Chinese Cabbage, Kohlrabi	7 Days	Ants, cutworms, crickets, earwigs, grasshoppers, grubs, seed maggots, weevils and wireworms.
<b>Cucurbit Vegetables</b> Chayote, Citron melon, Cucumber, Edible Gourd Muskmelon (Cantaloupe, casaba, Crenshaw melon, Golden melon, Honeydew Melon, Pineapple melon, Santa Claus melon, Snake melon) Pumpkin, Summer squash (Crookneck, Scallop, Straightneck, Zucchini) Winter squash (Butternut, Calabaza, Hubbard including Acorn and Spaghetti) Watermelon	3 Days	Ants, cutworms, crickets, earwigs, grasshoppers, grubs, seed maggots, weevils and wireworms.
Tomatoes	1 Day	Ants, cutworms, crickets, earwigs, grasshoppers, grubs, seed maggots, weevils and wireworms.
Peppers	7 Days	Ants, cutworms, crickets, earwigs, grasshoppers, grubs, seed maggots, weevils and wireworms.
Eggplant	7 Days	Ants, cutworms, crickets, earwigs, grasshoppers, grubs, seed maggots, weevils and wireworms.
Head Lettuce	7 Days	Ants, cutworms, crickets, earwigs, grasshoppers, grubs, seed maggots, weevils and wireworms.

<b>HOME VEGETABLE GARDEN SPREADER TIPS</b>		
Spreader	5 cups (1.2 lbs.) of product for 500 sq. ft.	Directions
Scotts AccuGreen® Drop Spreader	3-1/4	Operate spreader the longest way of the garden area. Overlap wheel marks to ensure uniform feeding. Shut off spreader when you have reached the header strips or stopped.
Scotts SpeedyGreen® Rotary	2	Shut off spreader anytime you stop. For complete coverage make each pass about five feet from the previous one, so some overlapping occurs.
Ferti-lome® YARD-RIGHT Hand Held Spreader	2	(1) Make certain setting selector is in closed position. Fill hopper with 1.2 lbs. of product for every 500 sq. ft. of treatment area. (2) Adjust selector to the #2 setting. (3) Apply product evenly over area walking at a steady pace while turning hand crank. If you apply a second application, spread at right angle to first. (4) The spreader will apply a uniform swath 6 ft. to 12 ft. wide. Note the path of the product spread and adjust for the return swath to avoid overlapping product."

When using other spreaders, calibrate the spreader settings based on the manufacturer's recommendations.

**Optional Warranty:**

**WARRANTY DISCLAIMAER AND LIMITATION OF LIABILITY**

The directions for use of this product must be followed carefully. TO THE EXTENT CONSISTENT WITH APPLICABLE LAW, (1) THE GOODS DELIVERED TO YOU ARE FURNISHED "AS IS" BY MANUFACTURER OR SELLER AND (2) MANUFACTURER AND SELLER MAKE NO WARRANTIES, GUARANTEES, OR REPRESENTATIONS OF ANY KIND TO BUYER OR USER, EITHER EXPRESS OR IMPLIED, OR BY USAGE OF TRADE, STATUTORY OR OTHERWISE, WITH REGARD TO THE PRODUCT SOLD, INCLUDING, BUT NOT LIMITED TO MERCHANTABILITY, FITNESS FOR A PARTICULAR PURPOSE, USE, OR ELIGIBILITY OF THE PRODUCT FOR ANY PARTICULAR TRADE USAGE. BUYER'S OR USER'S EXCLUSIVE REMEDY, AND MANUFACTURER'S OR SELLER'S TOTAL LIABILITY SHALL BE FOR DAMAGES NOT EXCEEDING THE COST OF THE PRODUCT.

**If you do not agree with or do not accept any of directions for use, the warranty disclaimers, or limitations on liability, do not use the product, and return it unopened to the Seller, and the purchase price will be refunded.**