



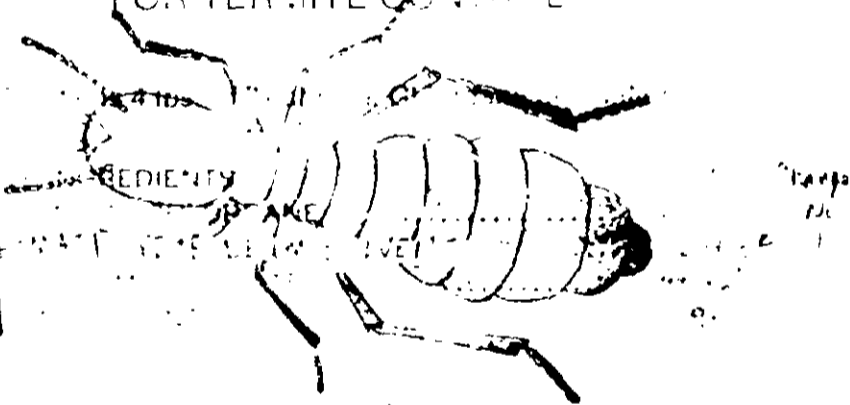
NET CONTENTS ONE GALLON 3.79L



BEST DOCUMENT AVAILABLE

# SUPER X-TERMITE CONTROL

DO-IT-YOURSELF CONCENTRATE FOR TERMITE CONTROL



\* Part Number of  
delete mistaken reference  
to PR 33-2

ACCEPTED  
JUL 16 1984  
in the Federal Register  
approved for sale  
under Federal Insecticide  
Act Reg. No.

KEEP OUT OF REACH OF CHILDREN  
**CAUTION**  
SEE STATEMENT OF PRACTICAL TREATMENT  
AND OTHER PRECAUTIONARY STATEMENTS ON SIDE PANEL

**TOBACCO STATES CHEMICAL CO., INC.**  
LEXINGTON, KENTUCKY

### SUBTERRANEAN TERMITES

Directions For Homeowner Use

#### MIXING DIRECTIONS

Mix the contents of this container with 48 parts water or at the rate of 5 1/3 tablespoons of this concentrate per gallon of water. Stir thoroughly to get good mixture of concentrate and water. Apply this mixture as directed.

### TERMITE CONTROL

#### IN EXISTING STRUCTURES

##### Buildings with Basements or Crawl-Spaces

First remove all wood debris and wood forms. Around piers, pipes, chimney bases and along foundations of poured concrete dig a trench 6 inches wide and 4 inches deep. For brick and block foundations dig the trench about 12 inches deep. If footing is more than 12 inches deep, make holes with a crowbar, pipe or a rod, about one foot apart that extend from the trench bottom to the top of the footing. Make holes closer in hard-packed clay soils. NEVER DIG BELOW THE TOP OF THE FOOTING. Apply the emulsion in the trench at a rate of 4 gallons per 10 linear feet per foot of depth. Apply half of this to the back-fill. Likewise, treat along the inside of foundations of crawl-space buildings. Cover treated soil with a thin layer of untreated soil.

For raised porches, terraces and entrance slabs, drill holes at one foot intervals 6 inches from the foundation, and pour one-half gallon of emulsion into each hole. Refill holes. Slabs with heat ducts or radiating heat pipes should be treated by commercial pest control operator.

The object is to establish a treated soil barrier which will prevent termite entry. Other critical areas may also require treatment, particularly if there are inaccessible areas, basements or slab-type construction. It is suggested that you contact the Agricultural Cooperative Extension Service for advice or consult a Commercial Pest Control Service.

Avoid contamination of public and private water supplies by following these precautions. Do not allow a hose or any type of faucet extension to reach into the termite chemical solution while filling or mixing this material with water. Use anti-back flow or anti-siphonage equipment on all filling equipment. These devices can be purchased at hardware or plumbing supply stores. Use of anti-back-flow equipment will help to insure that the user of this termite chemical will not contaminate domestic water supplies. Refer to Federal (Federal Housing Administration) state and local regulations for safe disposal of treatment areas from wells. Soil in the vicinity of wells, cisterns or ponds should not be treated if it is water saturated, subject to excessive evaporation due to an accumulation of water on the surface treated around the perimeter of the structure is at a grade lower than surrounding yard or property area. If this is the case, treat as follows: **Do Not Apply Under Pressure.** Soil should be removed to an area safe from well or domestic water contamination, treated with water, and dried for two to four hours then returned to the trench which has been lined with 4 mil plastic sheeting. Be careful not to tear the plastic sheeting when returning soil to the trench. Do not treat structures that contain cisterns or wells.

#### WARRANTY STATEMENT

TOBACCO STATES CHEMICAL CO. MAKES NO WARRANTY OF MERCHANTABILITY, FITNESS FOR PARTICULAR PURPOSES OR OTHERWISE, EXPRESS OR IMPLIED, concerning the use of this product, which it manufactures, and the statements on this label.