

CAUTION KEEP OUT OF REACH OF CHILDREN

**READ ENTIRE LABEL. USE AS DIRECTED. OBSERVE CAUTIONS AND WARNINGS.**

**HOW TO OPERATE:** Remove protective cap. Aim orifice away from you. Press valve to release spray.

**FOR BLACK WIDOWS AND OTHER SPIDERS:** Direct spray on pests whenever possible and spray into spider webs, cracks, crevices, baseboards and moldings; around door frames and window sills and storage shelves. These pests can also be found hiding in frames of patio furniture and in stored fireplace wood.

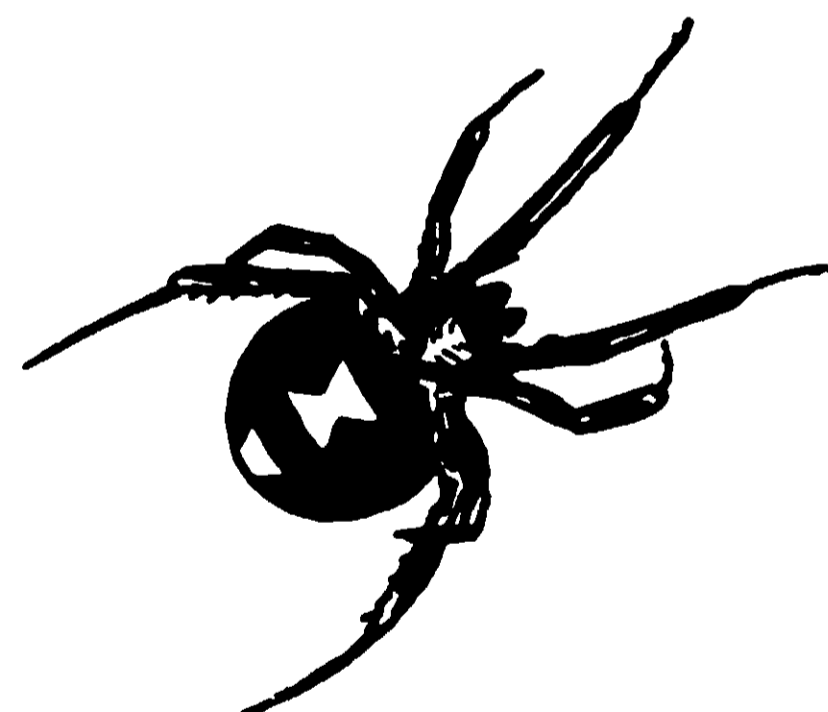
**FOR OTHER CRAWLING PESTS IN THE HOME SUCH AS ANTS, BEDBUGS, FLEAS, ROACHES, SILVERFISH AND SIMILAR PESTS:** Direct spray on pests whenever possible and wherever these pests are known to hide. Spray into cracks and crevices and under sinks, stoves and cabinets; around door frames, window sills and storage shelves. For BEDBUGS, spray bedframes, springs, mattress tufts and seams. Repeat as necessary.

**FOR FLEAS:** Thoroughly spray floor coverings and the quarters of animal pets.

**FOR FLYING INSECTS IN THE HOME SUCH AS HOUSE FLIES, MOSQUITOES, GNATS, WASPS AND SIMILAR PESTS:** Close doors and windows and fill the room with mist. For best results keep room closed for 15 minutes.



# BLACK WIDOW



# SPIDER BOMB

**CAUTION:** Avoid inhalation of mist. Do not direct spray on skin or towards face. In case of accidental contact with skin wash well with soap and water. Remove or cover fish bowl while spraying and do not spray around uncovered food. Do not store or use near heat or open flame.

**WARNING:** Contents of this can are under pressure. Do not puncture or incinerate this container when empty. Do not store above 120° F.

**KEEP OUT OF REACH OF CHILDREN.**

ACTIVE INGREDIENTS	
Terpene Polychlorinates (66% Chlorine)	2.00%
Technical Piperonyl butoxide*	.50%
Petroleum distillate	.48%
Pyrethrins	.10%

**INERT INGREDIENTS 96.92%**

\* Equivalent to 0.40% of butyl-carbityl (6-propyl-piperonyl) ether and 0.1% of related compounds.

USDA Reg. No. 192-47

NET CONTENTS 14 OZ.

DESTRUXOL CORPORATION, LTD.

TORRANCE, CALIFORNIA

ACCEPTED

Sept 12, 1969

UNDER THE FEDERAL INSECTICIDE  
FUNGICIDE AND RODENTICIDE ACT,  
FOR ECONOMIC POISON REGISTERED  
ED UNDER NO. 192-47 SUBJECT  
TO ATTACHED COMMENTS.

[192-47]

**CAUTION: KEEP OUT OF REACH OF CHILDREN**

SEE BACK PANEL FOR OTHER CAUTIONS

**READ ENTIRE LABEL. USE AS  
DIRECTED. OBSERVE CAUTIONS  
AND WARNINGS.**

**HOW TO OPERATE:** Remove protective cap. Aim orifice away from you. Press valve to release spray.

**FOR BLACK WIDOWS AND OTHER SPIDERS:** Direct spray on pests whenever possible and spray into spider webs, cracks, crevices, baseboards and moldings; around door frames and window sills and storage shelves. These pests can also be found hiding in frames of patio furniture and in stored fireplace wood.

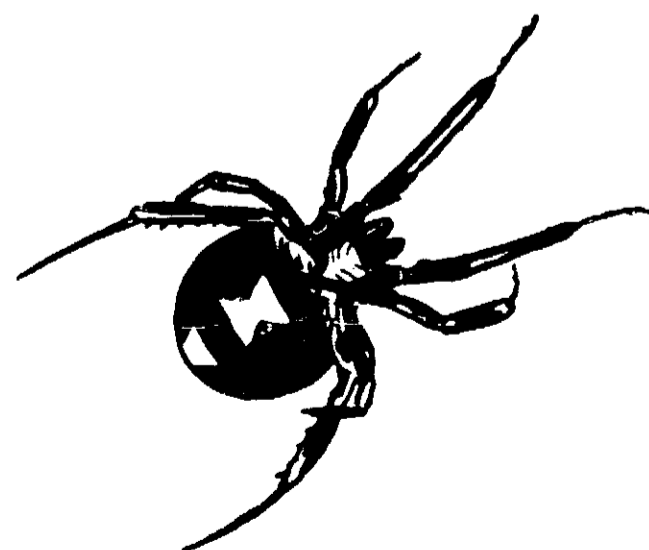
**FOR OTHER CRAWLING PESTS IN THE HOME SUCH AS ANTS, BEDBUGS, FLEAS, ROACHES, SILVERFISH AND SIMILAR PESTS:** Direct spray on pests whenever possible and wherever these pests are known to hide. Spray into cracks and crevices and under sinks, stoves and cabinets; around door frames, window sills and storage shelves. For BEDBUGS, spray bedframes, springs, mattress tufts and seams. Repeat as necessary.

**FOR FLEAS:** Thoroughly spray floor coverings and the quarters of animal pets.

**FOR FLYING INSECTS IN THE HOME SUCH AS HOUSE FLIES, MOSQUITOES, GNATS, WASPS AND SIMILAR PESTS:** Close doors and windows and fill the room with mist. For best results keep room closed for 15 minutes.



# BLACK WIDOW



# SPIDER BOMB

**CAUTION:** Avoid inhalation of mist. Do not direct spray on skin or towards face. In case of accidental contact with skin wash well with soap and water. Remove or cover fish bowl while spraying and do not spray around uncovered food. Do not store or use near heat or open flame.

**WARNING:** Contents of this can are under pressure. Do not puncture or incinerate this container when empty. Do not store above 120° F.

**KEEP OUT OF REACH OF CHILDREN.**

**ACTIVE INGREDIENTS**

Terpene Polychlorinates (66% Chlorine)	2.00%
Technical Piperonyl butoxide*	.50%
Petroleum distillate	.48%
Pyrethrins	.10%

**INERT INGREDIENTS** 96.92%

\* Equivalent to 0.40% of butyl carbityl (6-propyl piperonyl) ether and 0.1% of related compounds.

USDA Reg. No. 192-47

NET CONTENTS 14 OZ.