



U.S. ENVIRONMENTAL PROTECTION AGENCY

Office of Pesticide Programs
Registration Division (7505T)
1200 Pennsylvania Ave., N.W.
Washington, D.C. 20460

EPA Reg. Number:

100-1715

Date of Issuance:

10/6/22

NOTICE OF PESTICIDE:

Registration
 Reregistration
(under FIFRA, as amended)

Term of Issuance:

Conditional

Name of Pesticide Product:

ADVION ANT GEL STATION

Name and Address of Registrant (include ZIP Code):

Syngenta Crop Protection, LLC
P. O. Box 18300
Greensboro, NC 27419

Note: Changes in labeling differing in substance from that accepted in connection with this registration must be submitted to and accepted by the Registration Division prior to use of the label in commerce. In any correspondence on this product always refer to the above EPA registration number.

On the basis of information furnished by the registrant, the above named pesticide is hereby registered under the Federal Insecticide, Fungicide, and Rodenticide Act (FIFRA).

Registration is in no way to be construed as an endorsement or recommendation of this product by the Agency. In order to protect health and the environment, the Administrator, on his motion, may at any time suspend or cancel the registration of a pesticide in accordance with the Act. The acceptance of any name in connection with the registration of a product under this Act is not to be construed as giving the registrant a right to exclusive use of the name or to its use if it has been covered by others.

This product is conditionally registered in accordance with FIFRA section 3(c)(7)(A). You must comply with the following conditions:

1. Submit and/or cite all data required for registration/reregistration/registration review of your product under FIFRA when the Agency requires all registrants of similar products to submit such data.

Continues page 2

Signature of Approving Official:

Tamica Cain, Product Manager 10
Invertebrate & Vertebrate Branch 2
Registration Division (7505T)

Date:

10/6/22

2. You are required to comply with the data requirements described in the generic data call-in (GDCI) identified below:

- Indoxacarb GDCI-067710-1382

You must comply with all of the data requirements within the established deadlines. If you have questions about the GDCI listed above, you may contact the Chemical Review Manager in the Pesticide Re-Evaluation Division: <http://iaspub.epa.gov/apex/pesticides/f?p=chemicalsearch:1>

3. Make the following label changes before you release the product for shipment:
 - Revise the EPA Registration Number to read, "EPA Reg. No. 100-1715."
4. Submit one copy of the final printed label for the record before you release the product for shipment.

Should you wish to add/retain a reference to the company's website on your label, then please be aware that the website becomes labeling under FIFRA and is subject to review by the Agency. If the website is false or misleading, the product would be misbranded and unlawful to sell or distribute under FIFRA section 12(a)(1)(E). 40 CFR 156.10(a)(5) lists examples of statements EPA may consider false or misleading. In addition, regardless of whether a website is referenced on your product's label, claims made on the website may not substantially differ from those claims approved through the registration process. Therefore, should the Agency find or if it is brought to our attention that a website contains false or misleading statements or claims substantially differing from the EPA approved registration, the website will be referred to the EPA's Office of Enforcement and Compliance.

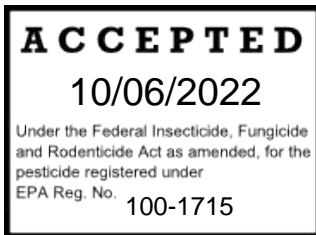
If you fail to satisfy these data requirements, EPA will consider appropriate regulatory action including, among other things, cancellation under FIFRA section 6(e). Your release for shipment of the product constitutes acceptance of these conditions. A stamped copy of the label is enclosed for your records.

The record for this product currently contains the following CSF(s):

- Basic CSF dated 06/11/2021
- Alternate CSF 1 dated 06/11/2021

If you have any questions, please contact Briana Hanlon at (202) 566-2716 or at hanlon.briana@epa.gov.

Enclosure



INDOXACARB **GROUP** **22A** **INSECTICIDE**

Advion[®] Ant Gel Station

Insecticide

FOR USE IN RESIDENTIAL, INSTITUTIONAL, COMMERCIAL, AND INDUSTRIAL AREAS

Active Ingredient:

Indoxacarb*

(S)-methyl 7-chloro-2,5-dihydro-2-[[[(methoxycarbonyl)[4(trifluoromethoxy) phenyl]amino]carbonyl]indeno[1,2-e][1,3,4]oxadiazine-4a-(3H)carboxylate 0.05%

Other Ingredients 99.95%

Total: 100.00%

*Indoxacarb belongs to the oxadiazine chemical class.

KEEP OUT OF REACH OF CHILDREN

Si usted no entiende la etiqueta, busque a alguien para que se la explique a usted en detalle.
(If you do not understand the label, find someone to explain it to you in detail.)

DO NOT TREAT AREAS THAT ARE EASILY ACCESSIBLE TO CHILDREN AND PETS.

EPA Reg. No. 100-xxxx
EPA Est.

Net Contents

[Batch Code: _____] (For nonrefillables only.)

FIRST AID

Have the product container or label with you when calling a poison control center or doctor or going for treatment.

HOTLINE NUMBER

For 24-Hour Medical Emergency Assistance (Human or Animal)
Or Chemical Emergency Assistance (Spill, Leak, Fire or Accident)

Call

1-800-888-8372

PRECAUTIONARY STATEMENTS

HAZARDS TO HUMANS AND DOMESTIC ANIMALS

Avoid contact with skin, eyes or clothing. Prolonged or frequently repeated skin contact may cause allergic reactions in some individuals. User should wash hands thoroughly with soap and water after handling and before eating, drinking, chewing gum, using tobacco, or using the toilet.

ENVIRONMENTAL HAZARDS

This pesticide is toxic to fish and aquatic invertebrates. Do not apply directly to water, or to areas where surface water is present, or to intertidal areas below the mean high water mark. Do not contaminate water when disposing of equipment washwater or rinsate. Runoff may be hazardous to aquatic organisms in water adjacent to treated areas. Runoff of this product will be reduced by avoiding applications when rainfall is forecasted to occur within 24 hours. Rinsing application equipment over the treated area will help avoid runoff to water bodies or drainage systems. Do not apply to any impervious surfaces which may contact or lead directly to surface water, storm drains, or urban runoff conveyance systems (gutters).

Physical and Chemical Hazards

Do not use this product in or on electrical equipment where a possibility of shock hazard exists.

DIRECTIONS FOR USE

It is a violation of federal law to use this product in a manner inconsistent with its labeling.

PRODUCT INFORMATION

Advion[®] Ant Gel Station is a ready-to-use bait station that is pre-filled with a gel bait to control major ant pest species, including Acrobat, Argentine, Big-headed, Carpenter, Cornfield, Crazy, Field, Ghost, Honey, Little black, Odorous house, Pavement, Pyramid,

Rover, Thief, and White-footed ants. Use of Advion Ant Gel Stations will kill ants within 6 days of placement if used according to the directions.

Advion Ant Gel Station is effective at killing Pharaoh ants, foraging red imported fire ants, and harvester ants. For complete control of outdoor nests of these species, use additional treatments labeled for outdoor nest control.

INSECT RESISTANCE MANAGEMENT

INDOXACARB	GROUP	22A	INSECTICIDE
------------	-------	-----	-------------

For resistance management, Advion Ant Gel Station contains a Group 22A insecticide. Any insect population may contain individuals naturally resistant to Advion Ant Gel Station and other Group 22A insecticides. The resistant individuals may dominate the insect population if this group of insecticides are used repeatedly in the same treated areas. Appropriate resistance-management strategies should be followed.

To delay insecticide resistance, take the following steps:

- Rotate the use of Advion Ant Gel Station or other Group 22A insecticides with different groups that control the same pests.
- Adopt an integrated pest management program for insecticide use that includes scouting, uses historical information related to pesticide use, record keeping, and which considers cultural, biological, and other chemical control practices.
- Monitor after application for unexpected target pest survival. If the level of survival suggests the presence of resistance, consult with your local university specialist or certified pest control advisor.

Contact your local Syngenta representative, retailer, or extension specialist for any additional pesticide resistance-management and/or IPM recommendations for the specific site and pest problems in your area. For further information or to report suspected resistance, contact Syngenta at 1-866-SYNGENT(A) (866-796-4368).

Syngenta encourages responsible product stewardship to ensure effective long-term control of the insects on this label.

Use Restrictions

- **DO NOT** place bait stations in areas that are easily accessible to children, pets, and zoo animals.
- **DO NOT** place bait stations near food preparation surfaces.
- **DO NOT** spray other insecticides over the top of the station as this may cause the bait inside to become unattractive.
- **DO NOT** place bait stations near areas or on surfaces where the temperature exceeds 120-130°F as bait may liquefy. Examples include, but are not limited to, portions of stoves, ovens, grills, fume hoods, heat lamps, coffee urns, steam tables, toasters, fryers, dishwashers, and hot water pipes.

- **DO NOT** place Advion Ant Gel Station in areas where food/feed, food utensils or food processing surfaces may come into contact and become contaminated.
- **DO NOT** place Advion Ant Gel Station in areas that are routinely washed such as cracks and crevices in the tops of tables, tops of food/feed preparation surfaces, and holding surfaces for prepared foods.

Use Precautions

- Activate the station as directed but avoid direct contact with the gel.
- When placed outdoors, ensure bait stations are placed in areas that are not exposed to direct rainfall.
- Avoid spraying over or around the Advion Ant Gel Station with other insecticides as this may interfere with ants entering the station and reduce the product's effectiveness.

DIRECTIONS FOR USE FOR PROFESSIONALS

Application Directions

Advion Ant Gel Stations can be used indoors or outdoors in single and multi-family residential homes, institutional, commercial, and industrial facilities, including schools, warehouses, apartments, supermarkets, restaurants, motels, hotels, hospitals, nursing homes, offices, zoos, retail establishments, food handling/storage establishments, and transportation equipment, such as aircraft, trains, ships, boats, and buses, and other similar sites where ant infestations occur.

Use Directions

- Inspect infested areas carefully to determine overall infestation levels and identify areas where ants are trailing or nesting to determine the most appropriate locations for the stations.
- **Indoors:** Place bait stations in areas including, but not limited to, pest entry sites, attics, wall voids, behind cabinets or equipment, under counters or appliances, along baseboards and adjacent to plumbing penetrations. Placement sites can include areas along walls or floors, behind or under equipment or appliances, under tables or furniture, around sinks, in cabinets, within or near garbage collection areas, and attics and crawl spaces.
- **Outdoors** (such as patios, decks, around landscaping): Place bait stations where ants are likely to enter the structure, such as utility penetrations or gaps around doors, windows, soffits, between construction elements, sewer areas, adjacent trees which harbor ants, along walls, garbage holding areas, or other placement sites acting as an ant harborage. Efforts to limit access of ants into the structure such as sealing cracks around doors, windows, or utility penetrations can be helpful in reducing ant infestations.

- Inspect Advion Ant Gel Station placements periodically and replace with new stations as needed.

Activation and Placement of Bait Stations

Prepare stations as directed before placing in areas of ant activity.

To use the station (see drawing below), follow these steps:

1. Remove bait station from packaging.
2. Cut or snap off the tab at the end of the bait station.
3. Activate the bait station by squeezing the gel compartment so the gel inside is moved into the central compartment of the station.
4. Place bait station near ant trails or other areas where ant activity has been observed.

When placing Advion Ant Gel Stations in active ant foraging areas, avoid disrupting the natural foraging behavior of ants.

Number of Bait Stations to Use and Retreatment Intervals

Indoors

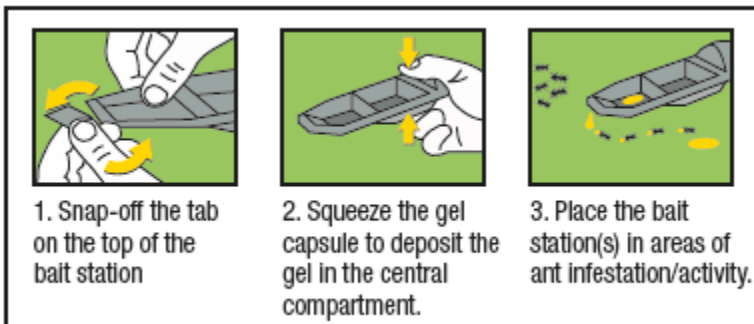
Place 3-8 Advion Ant Gel Stations in an average sized room (10' x 10').

- When ant activity is low, fewer stations can be used (1-4 stations per room).
- When ant activity is high, or the room size is bigger, more stations should be used.

Outdoors

Bait stations should be placed adjacent to the home or structure near ant activity or anywhere ants may gain access to the home or structure such as around doors and windows, utility penetrations, and other areas where ants are likely to enter.

Example of Advion Ant Gel Station Use



Applications in Non-food/Non-feed Handling Areas

Advion Ant Gel Station is designed to control ants in residential structures and the non-food /non-feed areas of commercial, industrial, public and institutional buildings/structures, including restaurants, warehouses, food processing plants,

supermarkets, hospitals, nursing homes, motels, hotels, schools, laboratories, computer facilities, aircraft, buses, boats/ships, trains, pet shops, and zoos.

Non-food/non-feed areas include areas, such as garbage rooms, lavatories, floor drains (to sewers), entries and vestibules, offices, locker rooms, machine rooms, boiler rooms, garages, mop closets, and storage (after bottling or canning). Refer to the section below for use directions and restrictions when making applications in food/feed handling areas of Food/Feed Handling Establishments.

Applications in Food/Feed Handling Areas

Food and feed handling areas include areas for receiving, storage, packing (canning, bottling, wrapping, boxing), preparing, edible waste storage, and enclosed processing systems (mills, dairies, edible oils, syrups). Serving areas are also considered a food/feed area when food is uncovered and the facility is in operation.

- Do not place Advion Ant Gel Station in areas where food/feed, food utensils or food processing surfaces may come into contact and become contaminated.
- Do not place Advion Ant Gel Station in areas that are routinely washed such as cracks and crevices in the tops of tables, tops of food/feed preparation surfaces, and holding surfaces for prepared foods.
- Do not place Advion Ant Gel Station near or on surfaces where the temperature exceeds 120-130°F because this could cause the bait to liquefy and lose effectiveness.
 - Examples include, but are not limited to, parts of stoves, ovens, grills, fume hoods, saunas, heat lamps, coffee urns, steam tables, toasters, fryers, dishwashers, and hot water pipes.

DIRECTIONS FOR USE FOR CONSUMERS

APPLICATION DIRECTIONS

Advion Ant Gel Stations can be used indoors or outdoors in single and multi-family residential homes, including schools, daycare centers, apartments, motels, hotels, and recreational equipment, such as boats and RV's, and other similar sites where ant infestations occur.

Activation and Placement of Bait Stations

Prepare stations as directed before placing in areas of ant activity.

To use the station (see drawing below), follow these steps:

1. Remove bait station from packaging.
2. Cut or snap off the tab at the end of the bait station.
3. Activate the bait station by squeezing the gel compartment so the gel inside is moved into the central compartment of the station.
4. Place the bait station near ant trails or other areas where ant activity has been observed.

When placing Advion Ant Gel Stations in active ant foraging areas, avoid disrupting the natural foraging behavior of ants.

Number of Bait Stations to Use and Retreatment Intervals

Indoors

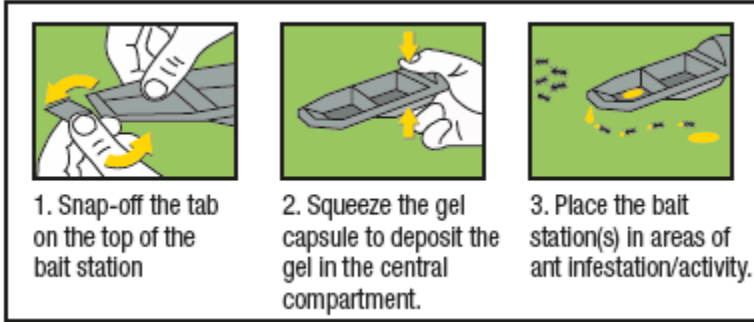
Place 3-8 Advion Ant Gel Stations in an average sized room (10' x 10').

- When ant activity is low, fewer stations can be used (1-4 stations per room).
- When ant activity is high or the room size is bigger, more stations should be used.

Outdoors

Bait stations should be placed adjacent to the home or structure near ant activity or anywhere ants may gain access to the home or structure such as around doors and windows, utility penetrations, and other areas where ants are likely to enter.

Example of Advion Ant Gel Station Use



STORAGE AND DISPOSAL

Do not contaminate water, food or feed by storage and disposal.

Pesticide Storage

Store in cool, dry place inaccessible to children and pets.

Pesticide Disposal

Wastes resulting from the use of this product must be disposed of on site or at an approved waste disposal facility.

Container Handling

Nonrefillable Container: Do not reuse or refill this container. Offer for recycling if available. Place empty bait dispensers in trash. If partially filled, wrap in newspaper and discard in trash or call your local solid waste authority for disposal instructions.

CONDITIONS OF SALE AND LIMITATION OF WARRANTY AND LIABILITY

NOTICE: Read the entire Directions for Use and Conditions of Sale and Limitation of Warranty and Liability before buying or using this product. If the terms are not acceptable, return the product at once, unopened, and the purchase price will be refunded.

The Directions for Use of this product must be followed carefully. It is impossible to eliminate all risks inherently associated with the use of this product. Crop injury, ineffectiveness or other unintended consequences may result because of such factors as manner of use or application, weather or crop conditions, presence of other materials or other influencing factors in the use of the product, which are beyond the control of SYNGENTA CROP PROTECTION, LLC or Seller. To the extent permitted by applicable law, Buyer and User agree to hold SYNGENTA and Seller harmless for any claims relating to such factors.

SYNGENTA warrants that this product conforms to the chemical description on the label and is reasonably fit for the purposes stated in the Directions for Use, when used in accordance with directions under normal use conditions. To the extent permitted by applicable law: (1) this warranty does not extend to the use of this product contrary to label instructions or under conditions not reasonably foreseeable to or beyond the control of Seller or SYNGENTA, and (2) Buyer and User assume the risk of any such use. TO THE EXTENT PERMITTED BY APPLICABLE LAW, SYNGENTA MAKES NO WARRANTIES OF MERCHANTABILITY OR OF FITNESS FOR A PARTICULAR PURPOSE NOR ANY OTHER EXPRESS OR IMPLIED WARRANTY EXCEPT AS WARRANTED BY THIS LABEL.

To the extent permitted by applicable law, in no event shall SYNGENTA be liable for any incidental, consequential or special damages resulting from the use or handling of this product. **TO THE EXTENT PERMITTED BY APPLICABLE LAW, THE EXCLUSIVE REMEDY OF THE USER OR BUYER, AND THE EXCLUSIVE LIABILITY OF SYNGENTA AND SELLER FOR ANY AND ALL CLAIMS, LOSSES, INJURIES OR DAMAGES (INCLUDING CLAIMS BASED ON BREACH OF WARRANTY, CONTRACT, NEGLIGENCE, TORT, STRICT LIABILITY OR OTHERWISE) RESULTING FROM THE USE OR HANDLING OF THIS PRODUCT, SHALL BE THE RETURN OF THE PURCHASE PRICE OF THE PRODUCT OR, AT THE ELECTION OF SYNGENTA OR SELLER, THE REPLACEMENT OF THE PRODUCT.**

SYNGENTA and Seller offer this product, and Buyer and User accept it, subject to the foregoing Conditions of Sale and Limitation of Warranty and of Liability, which may not be modified except by written agreement signed by a duly authorized representative of SYNGENTA.

Advion[®], the ALLIANCE FRAME,
the SYNGENTA Logo
and the PURPOSE ICON
are Trademarks of a Syngenta Group Company

©20__ Syngenta

For non-emergency (e.g., current product information), call Syngenta Crop Protection at 1-800-334-9481

Manufactured for:
Syngenta Crop Protection, LLC
P.O. Box 18300
Greensboro, North Carolina 27419-8300

[OPTIONAL MARKETING CLAIMS:

[Ready-to-Use, Pre-filled stations]

[Easy to use]

[No Mess]

[No Odor]

[The Strength of Advion[®] Ant Gel in a Disposable Station]

Advion Ant Gel Station XXXX NEW-C JUNE2021-CL-jd-9/26/22
00100-0XXX.20210618C.Advion_Ant_Gel_Station.NEW.JUNE2021-CL.pdf