

000436

1. Name of the active ingredient in the pesticide: *1-(2,4-dichlorophenyl)butan-1-one*

10. Mr. Jesse E. Hayes, Acting Chief
 Coordination Branch
 Registration Division (MH-567)

Registration No.: 100-EXP-X

Product Name: CPA 24705 6LC

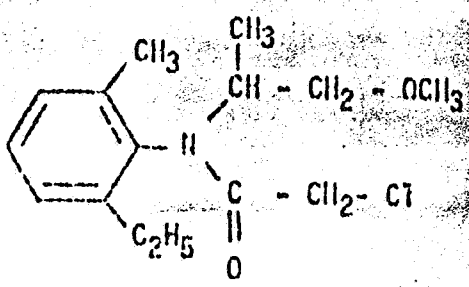
Petition No.: 561553

Proposed Use: Pre-emergence herbicide for selected grass
 and broadleaf weed control in corn.

Company: Ciba-Geigy Corp.

Proposed Tolerance: 0.75 ppm in or on corn forage and fodder;
 0.15 ppm in or on fresh corn, including
 sweet corn (kernels plus cob with husk
 removed) and corn grain; 0.02 ppm in or
 on eggs, milk, and the meat, fat, and
 meat byproducts of cattle, goats, hogs,
 horses, poultry and sheep

Structural Formula:



BEST AVAILABLE COPY

1574

Physical/Chemical Properties:

Form: Liquid
B.P.: 100-105°C
M.P.: ca 10°C

Solubility:

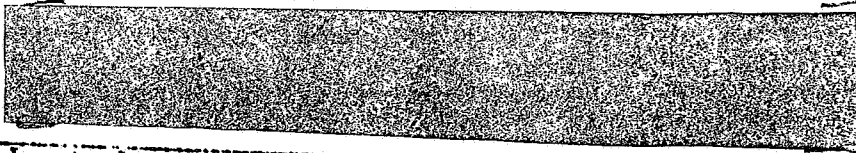
Water: 530 ppm at 20°C
Miscible in: xylene, toluene, dimethyl formamide,
methyl cellosolve, butyl cellosolve,
ethylacetate, dichloride, cyclohexanone
Insoluble in ethylene glycol and propylene glycol

Formulation:

Active Ingredient

2-Chloro-N-(2-ethyl-6-methylphenyl)-
N-(2-methoxy-1-methyl-ethyl)acetamide 74.1%
(CGA-24705 Technical)

Inactive Ingredient



* Inert cleared under 180.1001 (c), (d) & (e)
** Cleared under 180.1001(c)

Toxicological Evaluation:

Acute Oral Toxicity -

Technical, Rat LD₅₀ = 2780 mg/kg
CGA 24705 GEC, Rat (M) LD₅₀ = 4286 mg/kg
" " Rat (F) LD₅₀ = 2828 mg/kg

INERT INGREDIENT INFORMATION IS NOT INCLUDED

BEST AVAILABLE COPY

2

LD₅₀

Technical, Dog Produced vomiting at 19.0 mg/kg,
(emesis occurred prior to onset
of toxic symptoms).
CGA 24705 6EC, Dog Produced emesis at 24.5 mg/kg

Acute Dermal Toxicity -

Technical, Rabbit LD₅₀ >10,000 mg/kg
CGA 24705 6EC, Rabbit LD₅₀ >10,000 mg/kg

Acute Inhalation Toxicity -

Technical, Rat LC₅₀ >1.75 mg/l
CGA 24705 6EC, Rat LC₅₀ >247 mg/l

Eye Irritation -

Technical, Rabbit Non-irritating (0.0/110)
CGA 24705 6EC, Rabbit Scattered or diffuse areas of
opacity persistent for 7 days.

Primary Skin Irritation -

Technical, Rabbit Non-irritating (0.1/8.0)
CGA 24705 6EC, Rabbit Non-irritating (1.6/8.0)

Skin Sensitization in Guinea Pig -

Technical - Not a sensitizer
6 hr erythema - 1.24
6 hr edema - 0.80
14 day erythema - 0.70
14 day edema - 0.50

Subacute Dermal Toxicity -

21-Day, CGA 24705 6E (37.5%), Rabbit* Study
Incomplete
21-Day, CGA 24705 6E (75%), Rabbit* Study
Incomplete

* Lacking histopathology report

BEST AVAILABLE COPY

3

000436

Subacute oral toxicity

90-Day, Rat

LD1 100 mg/kg/day
(2000 ppm)

90-Day, Dog

LD1 10 mg/kg/day
(5000 ppm) - 15 wks
36 mg/kg/day
(1000 ppm) - 7 wks

Findings/Recommendations

TB finds that the data in IP No. 561553 supports the safety of the proposed tolerance of CGA 24705 GEC in or on corn at 0.05 ppm; in or on eggs, milk, meat and meat byproducts at 0.02 ppm; and in or on corn forage/fodder at 0.75 ppm.

Based on the toxicity data submitted, the following precautionary labeling is required:

- (a) The front panel precautionary labeling must meet the type size and prominence requirements.
- (b) "DANGER: Keep Out of Reach of Children. Corrosive. Causes eye damage. Do not get in eyes or on clothing. Wear goggles or face shield when handling. Avoid contamination of food."

(The signal word "DANGER" is based on eye irritation studies with CGA 24705-GEC).

- (c) "First Aid: In case of contact, immediately flush eyes with plenty of water for at least 15 minutes. Call a physician. Remove and wash contaminated clothing before reuse."

Robert B. Jaeger

Robert B. Jaeger, Physiologist
Toxicology Branch
Registration Division (MH-567)

cc:
Div. File RBJaeger/ccw
Br. File 11/12/74

BEST AVAILABLE COPY

f