

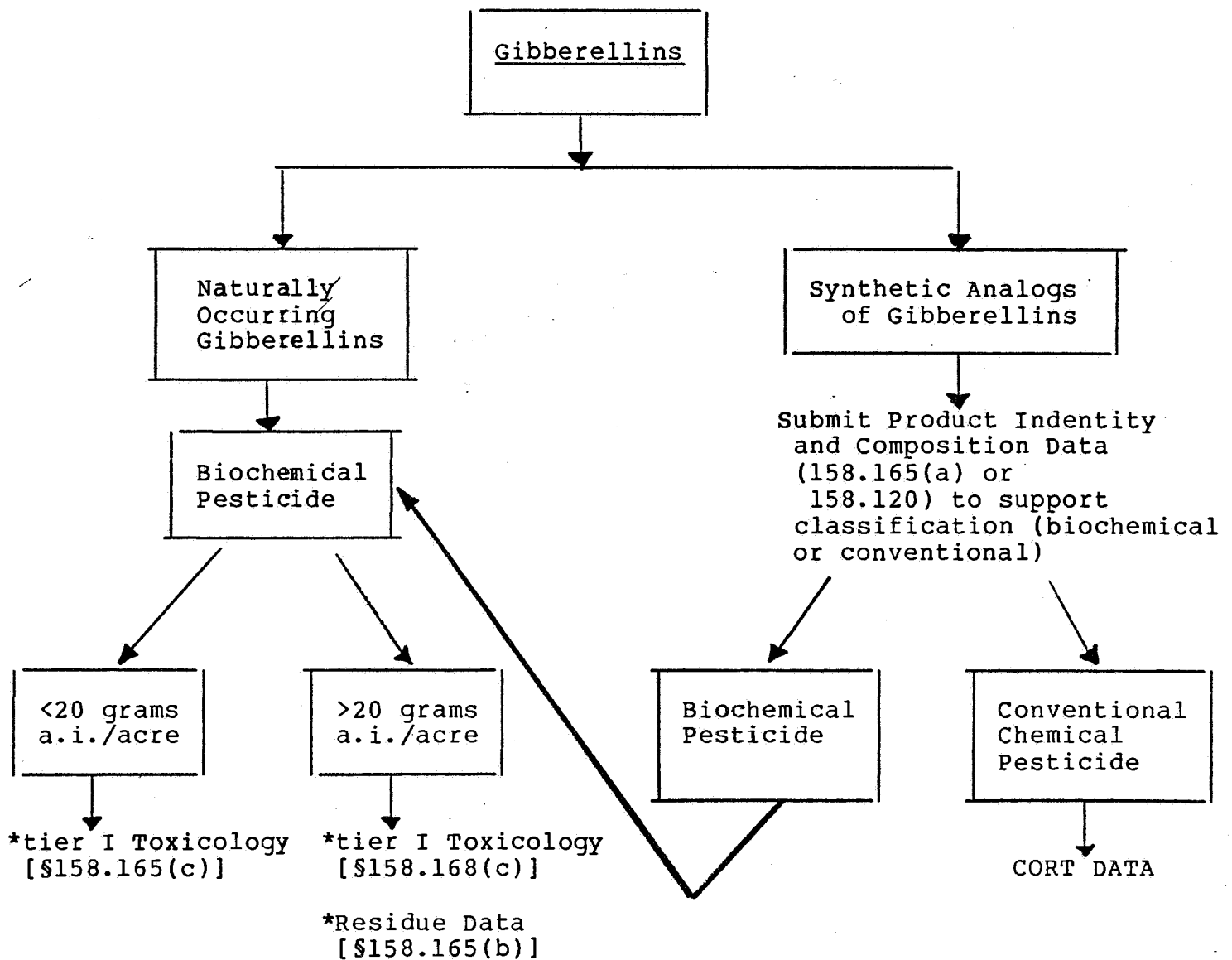
NOV 16 1987

Note to: Geri Werdig
Barbara Briscoe

Subject: Gibberellins Data Call-In

From: Fred Betz *Fred Betz*

I hope your questions were answered at our November 13 meeting. I have sketched out the scheme we discussed, showing how different products would be handled and what data are required. Please let me know if you have further questions.



cc: Reto Engler
Dick Schmitt
Doug Urban/~~Zig Vaituzis~~
Herb Manning